



NORTHWESTERN UNIVERSITY SCHOOL OF LAW

Connecting to the Network with Windows XP

These instructions are intended only for students or faculty-in-residence living on campus. If you are a staff or faculty member in an office, you should contact your network administrator for more information.

***Note:** The instructions are based on the default theme and menus of Windows XP.

Before You Begin

To connect to NU Law Network, you must have:

- Ethernet adapter installed
- Ethernet cable connected to an ethernet port

Checking for TCP/IP

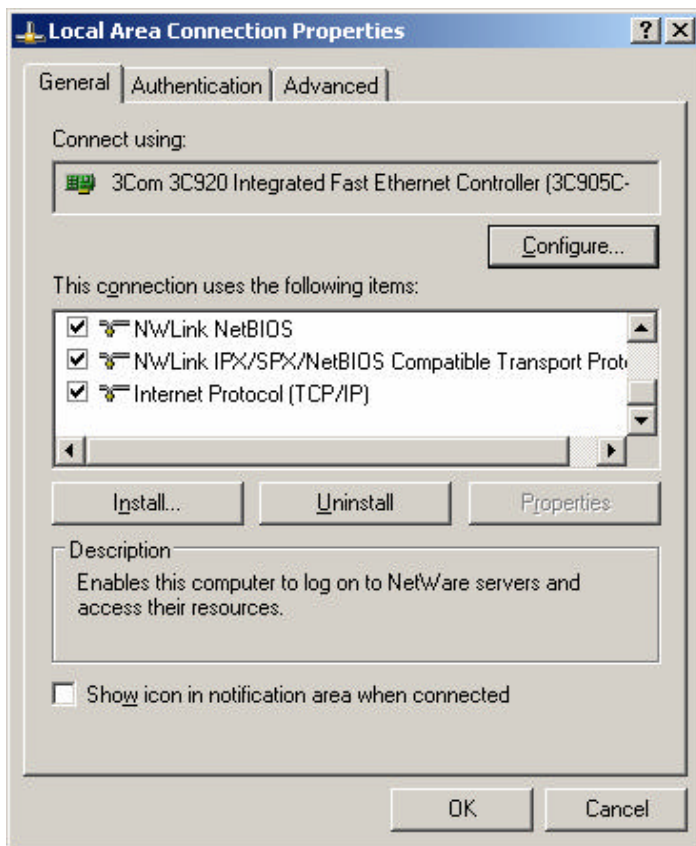
1. Select **Start | Control Panel**
2. The **Network and Internet Connections** window appears and select the **Network Connections** icon.
3. Right click on the **Local Area Connection** icon and choose properties from the menu that appears. The Local Area Connection Properties window appears.
4. In the listing of "This connection uses the following items," if you see Internet Protocol (TCP/IP) in this list, that protocol is already installed and you may skip ahead to "Configuring the TCP/IP Protocol." If you do not see Internet Protocol (TCP/IP), follow the instructions in the section titled "Adding TCP/IP."

Adding TCP/IP

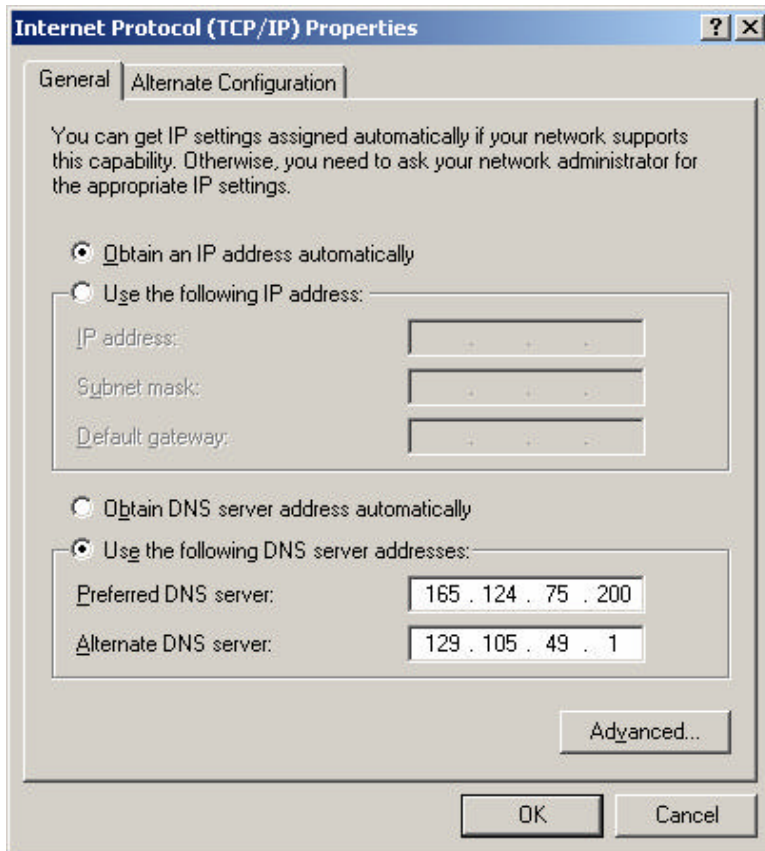
1. In the Local Area Connection Properties window, click on **Install**.
2. The Select Network Component Type window appears.
3. Click to select **Protocol**, then click **Add**. The Select Network Protocol window appears.
4. Click to select **Internet Protocol (TCP/IP)**, then click **OK**.

Configuring the TCP/IP Protocol

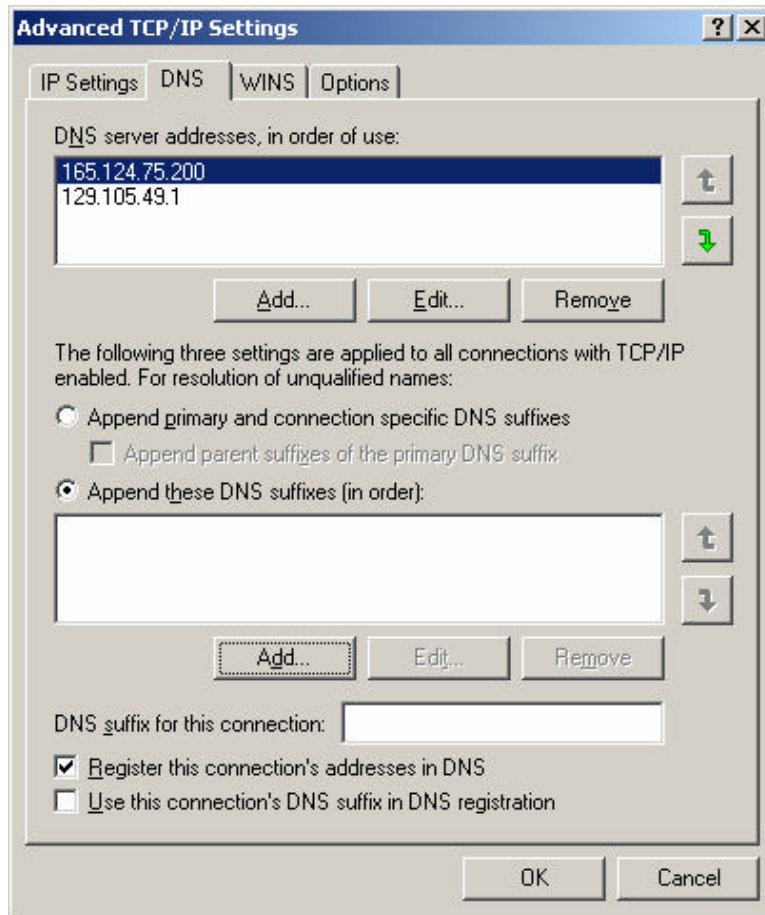
1. Select **Start | Control Panel**
2. The **Network and Internet Connections** window appears and select the **Network Connections** icon.
3. Right click on the **Local Area Connection** icon and choose **Properties** from the menu that appears. The Local Area Connection Properties window appears.
4. Select the **Internet Protocol (TCP/IP)** option from the list of Installed components. Then click **Properties**. The Internet Protocol (TCP/IP) Properties window appears.



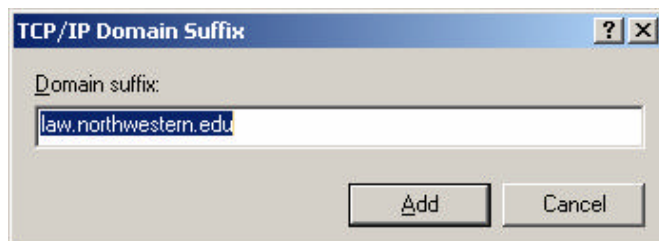
5. Select **Obtain an IP address automatically**.



6. Check **Use the following DNS server addresses**.
 - a. Preferred DNS server 165.124.75.200 and
 - b. Alternate DNS server 129.105.49.1
7. Click on **Advanced** button and the Advanced TCP/IP setting windows appears. Click on the DNS tab.



8. Check Append these DNS suffixes (in order) and click on **Add** Button.



9. Enter the following in the Domain suffix: law.northwestern.edu and click Add.
10. Click **OK** to close the Advanced TCP/IP Settings windows.
11. Click **OK** to close the Internet Protocol (TCP/IP) Properties window.
12. Click **OK** to close the Local Area Connection Properties window.

13. Click **OK** to close the Local Area Connection window.