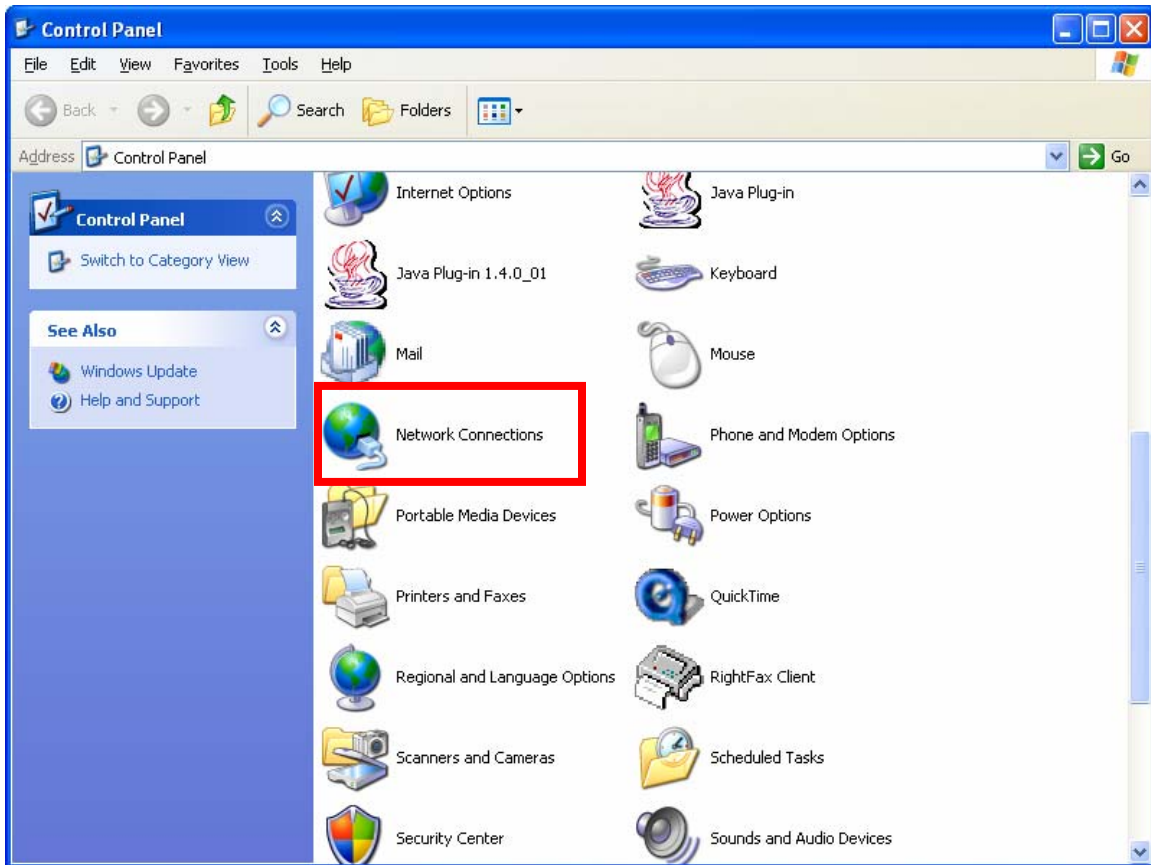
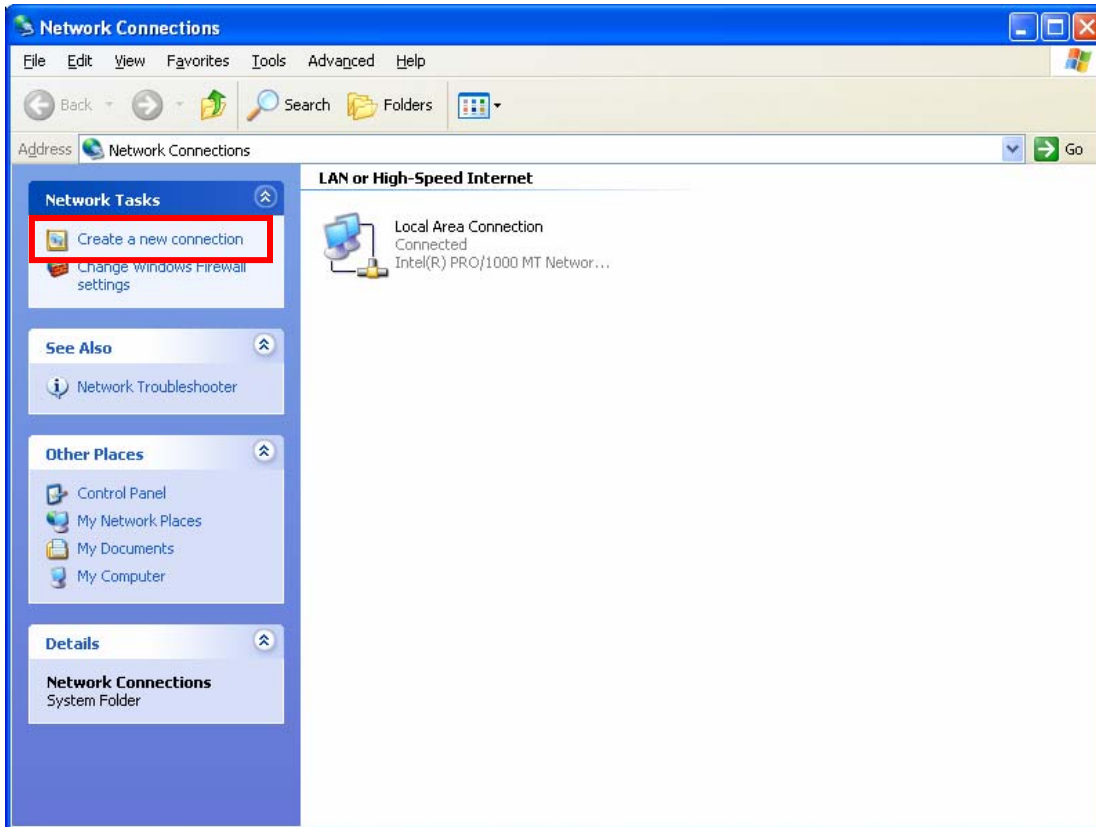


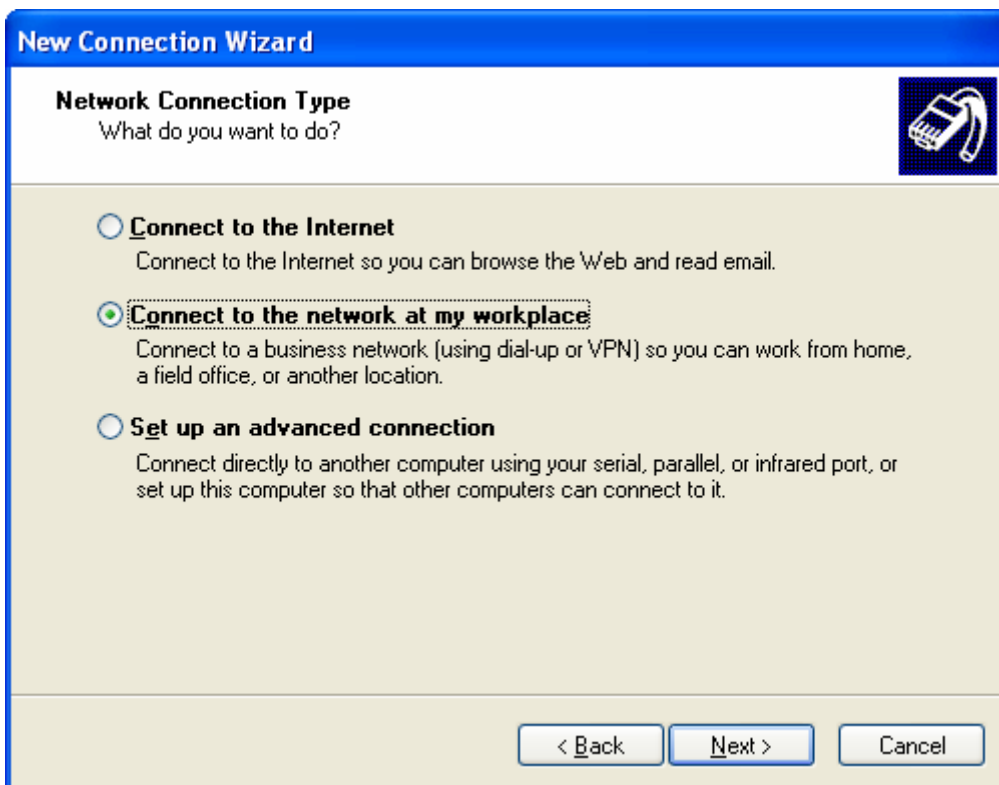
Configuring VPN for Microsoft Windows XP



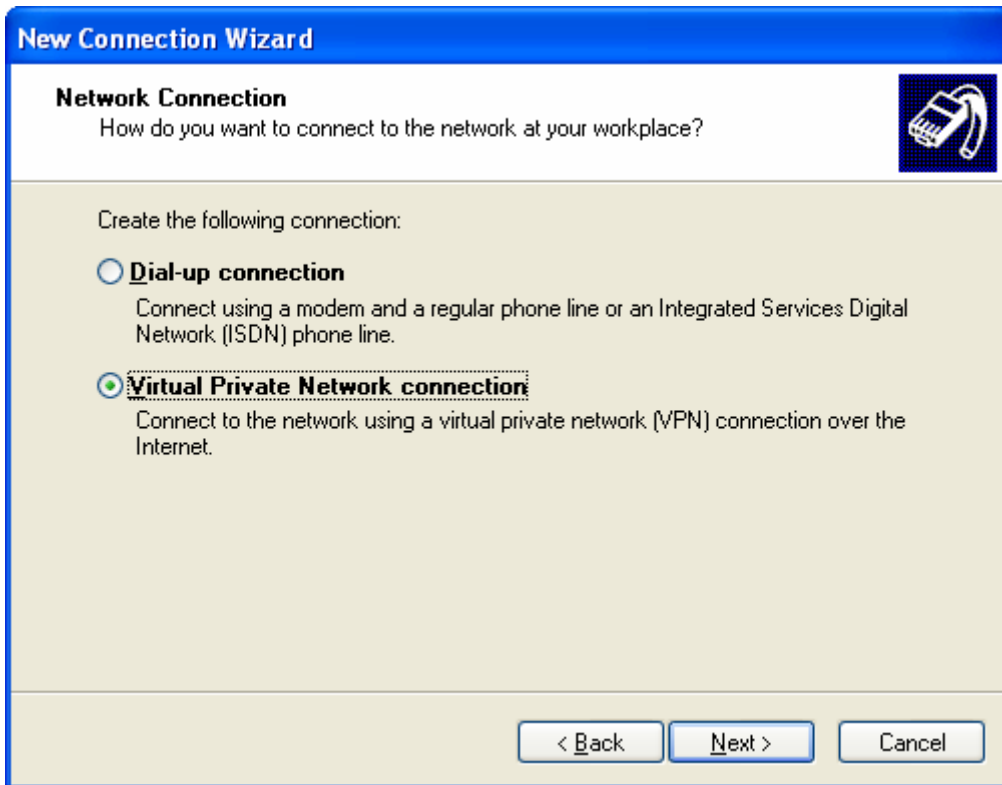
1. Click on *Start* and choose *Control Panel*. Click on *Network Connections*.



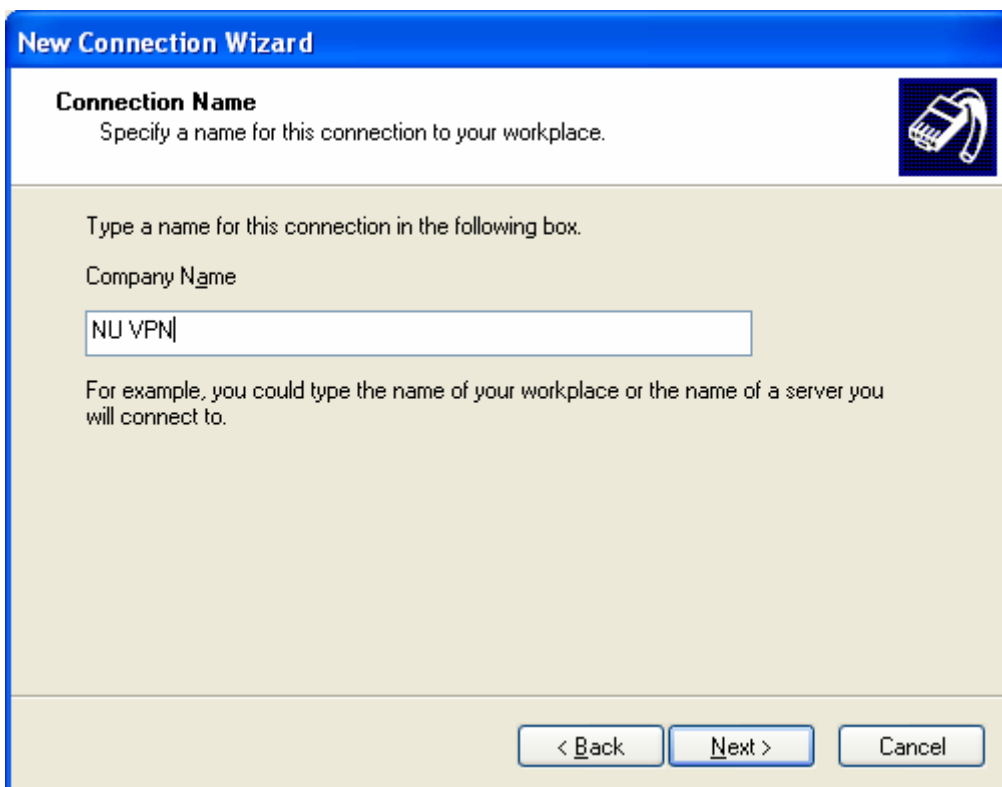
2. Double-click on *Create a new connection*.
3. Click *Next* on the *Welcome to New Connection Wizard* screen.



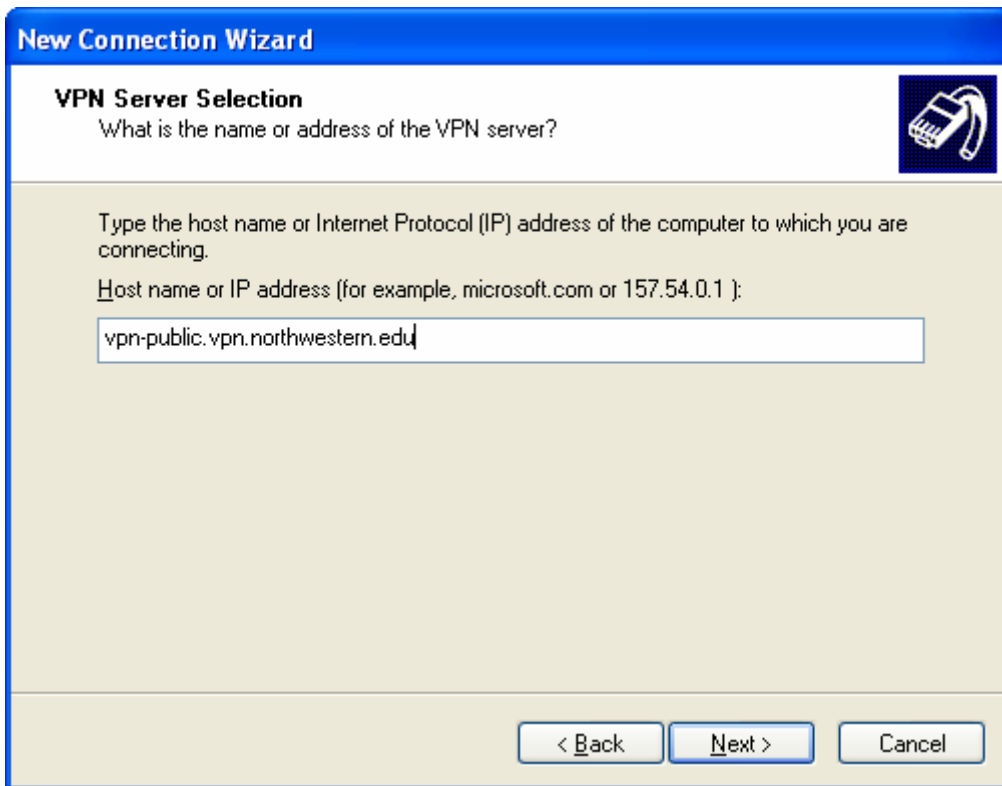
4. For *Network Connection Type* select *Connect to the network at my workplace* and click *Next*.



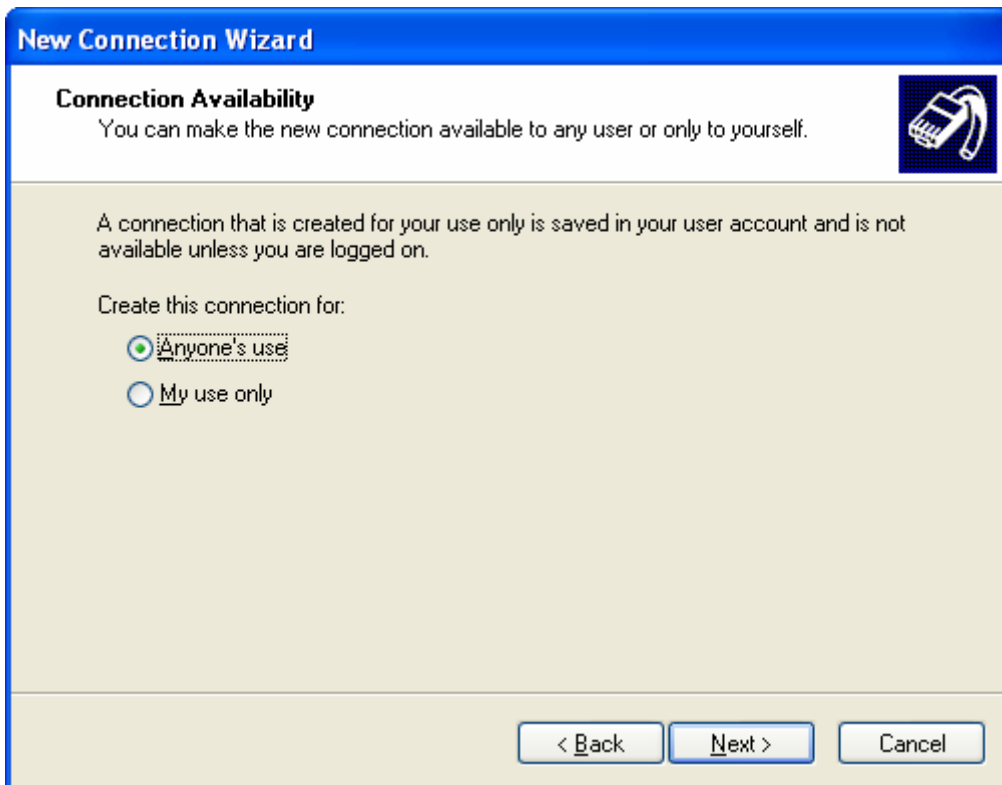
5. For *Network Connection*, choose *Virtual Private Network connection* and click *Next*.



6. Type **NU VPN** in the *Company Name* field for the *Connection Name* window and click *Next*.



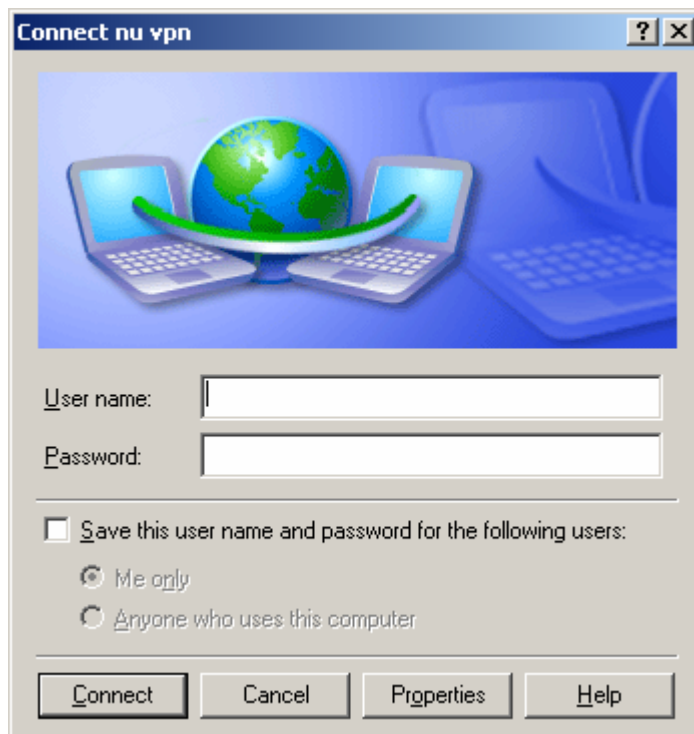
7. Type in **vpn-public.vpn.northwestern.edu** for *Host name* on the *VPN Server Selection* window and click *Next*.



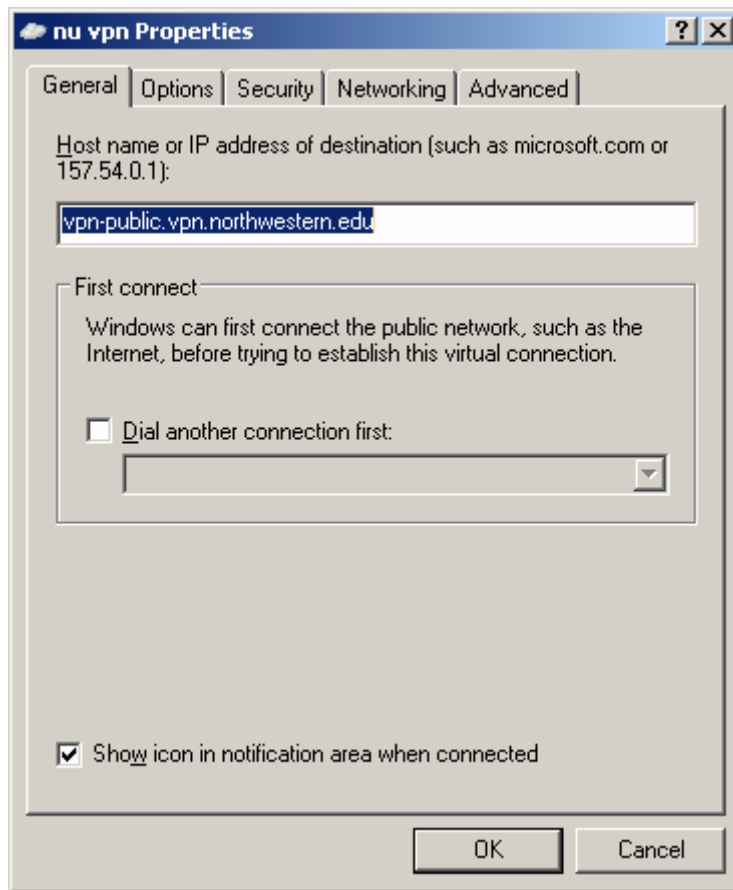
8. Select *Anyone's use* for *Connection Availability* and click *Next*.



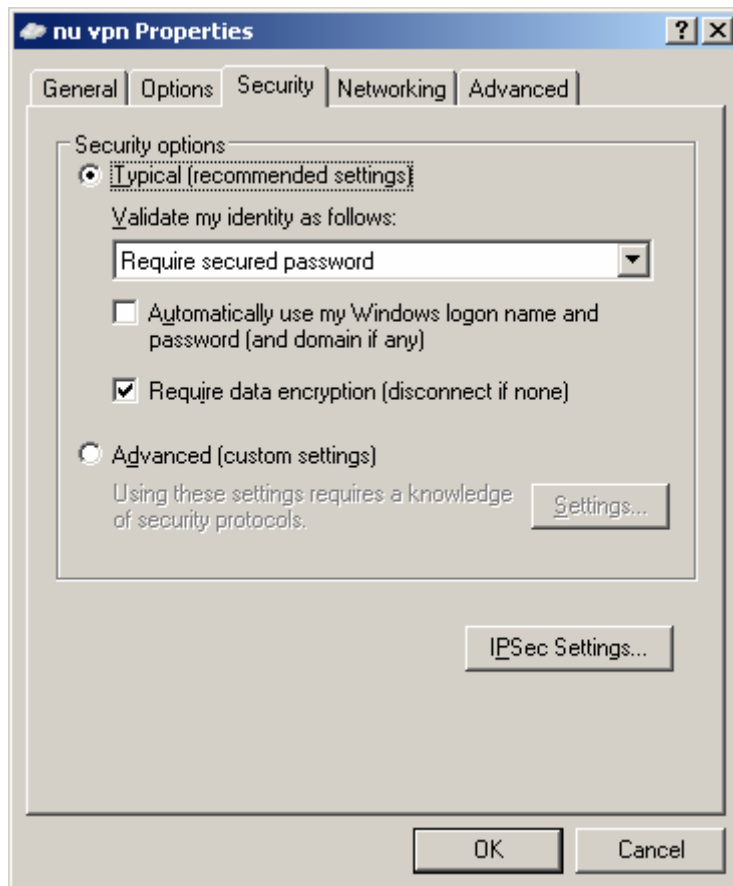
9. Check *Add a shortcut to this connection to my desktop* and click *Finish*.



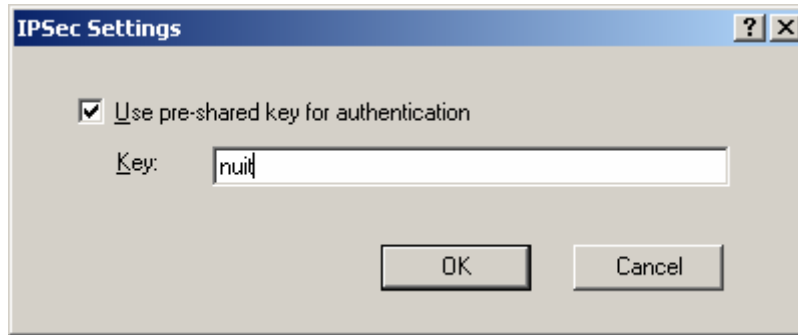
10. Click on *Properties*.



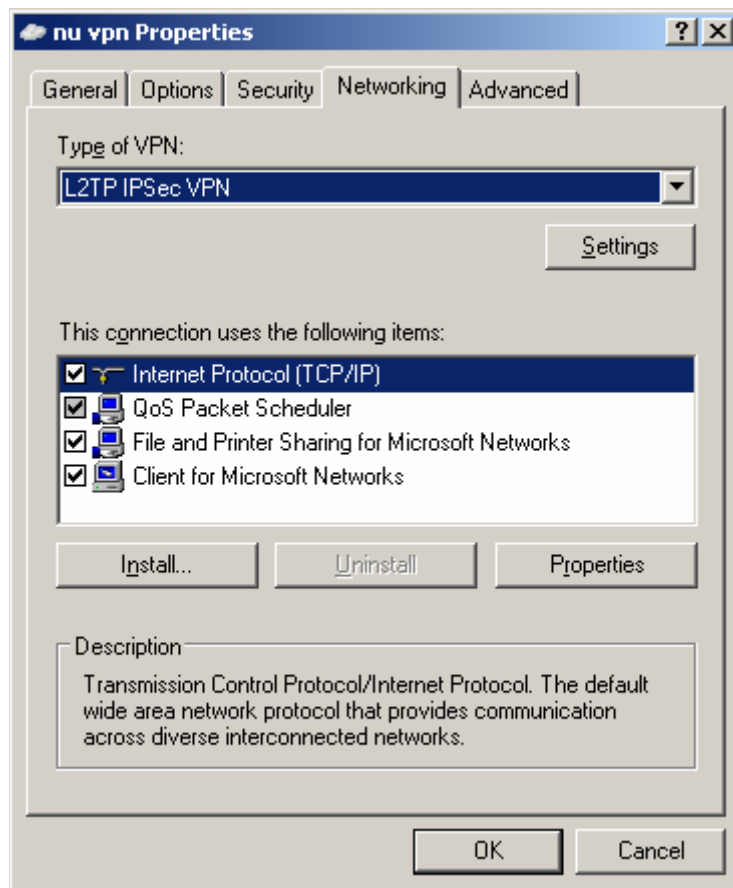
11. Click on the *Security* tab.



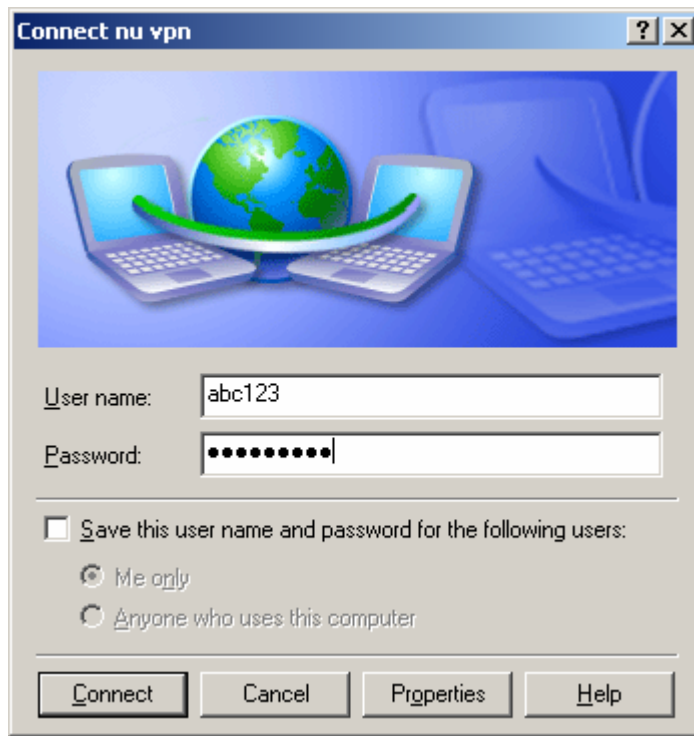
12. Click on *IPSec Settings*.



13. Check *Use pre-shared key for authentication* and type **nuit** for *Key*. Click **OK**, and it will return back to *Security* tab window. Click on *Networking* tab.



14. Choose **L2TP** for *Type of VPN* and click **OK**.



15. The Connect NU VPN window will appear. For **User name**, type in your **NetId** and for **Password** type in your **NetId password**. Click **Connect** to establish the VPN connection. An icon will appear on the bottom right corner of your screen next to the clock.

You have now successfully set up and configured your VPN connection.

Establishing a VPN Connection

On your desktop, double-click on the **NU VPN** icon. Provide your **NetId** and **password** (see above instructions) and click on **Connect**. You will now be able to wirelessly access the Internet.