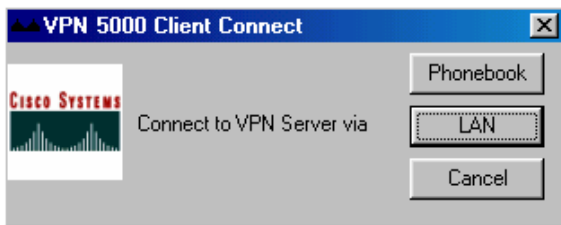


## Connecting with VPN for Wireless

VPN stands for Virtual Private Networking, used to establish secure connections between computers. In order to use the Northwestern Law School wireless network, you must first connect with VPN.

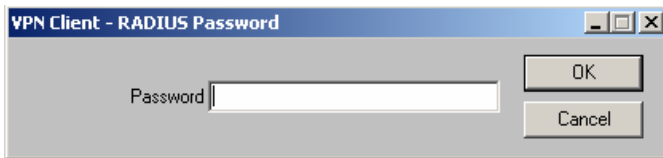
Once you have authenticated to VPN, you can choose whether to log on to the law school's network (Enterprise). Remember, if you only want to check e-mail or connect to the Internet, you do not have to log on to the Enterprise network.

When your computer starts up, wait for the following VPN 5000 Client Connect window to appear.



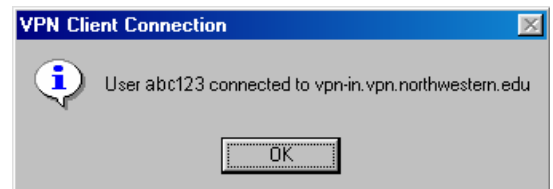
Click **LAN**.

Then wait for the following VPN Client – RADIUS Password window. (It may take a while for this window to appear, up to 30 seconds or so. Just be patient.)



Enter your network password and click **OK**.

When the VPN Client Connection window appears, click OK.



That's it!

You can now check your e-mail or open a web browser, or log on to Enterprise.