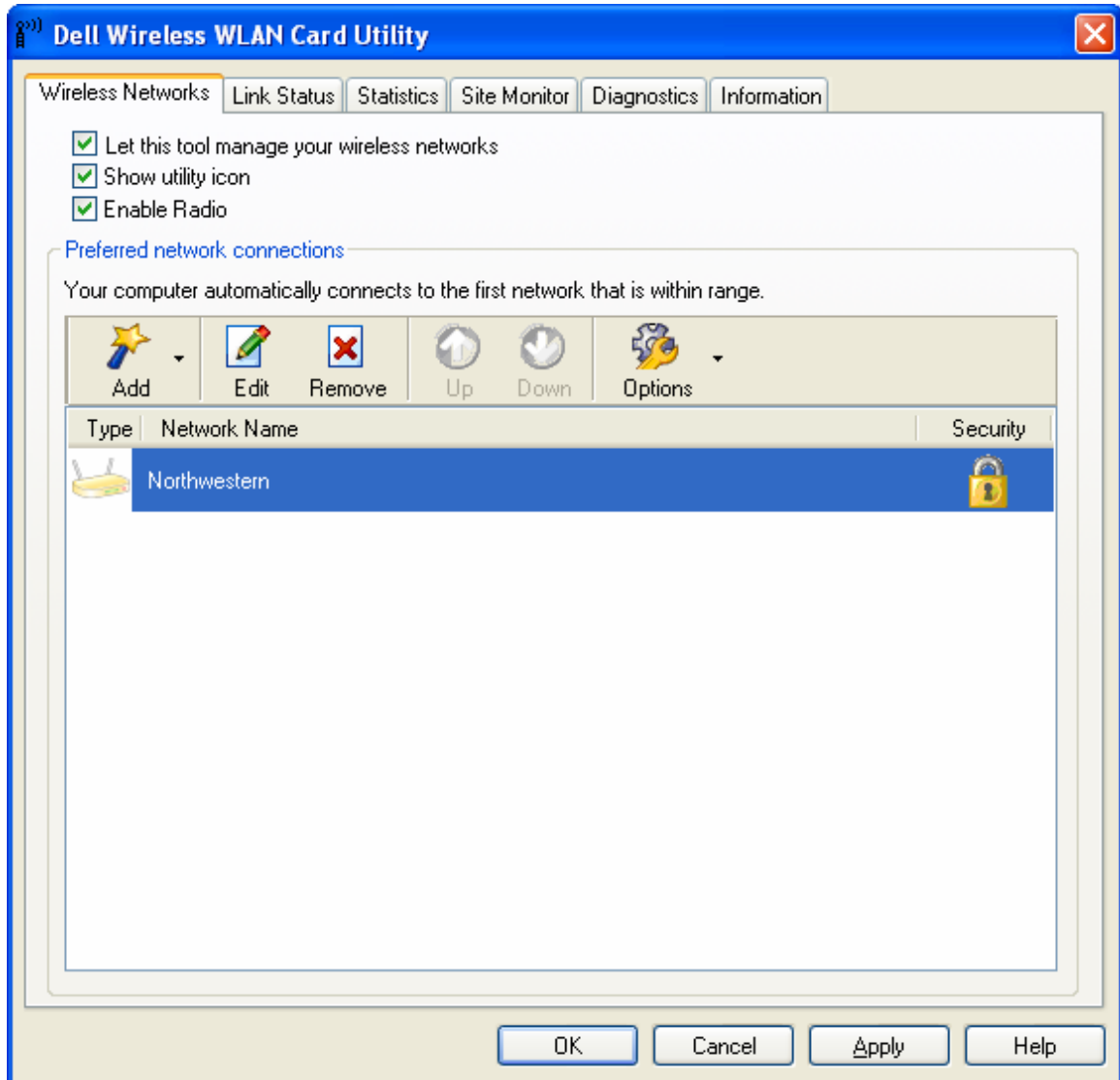
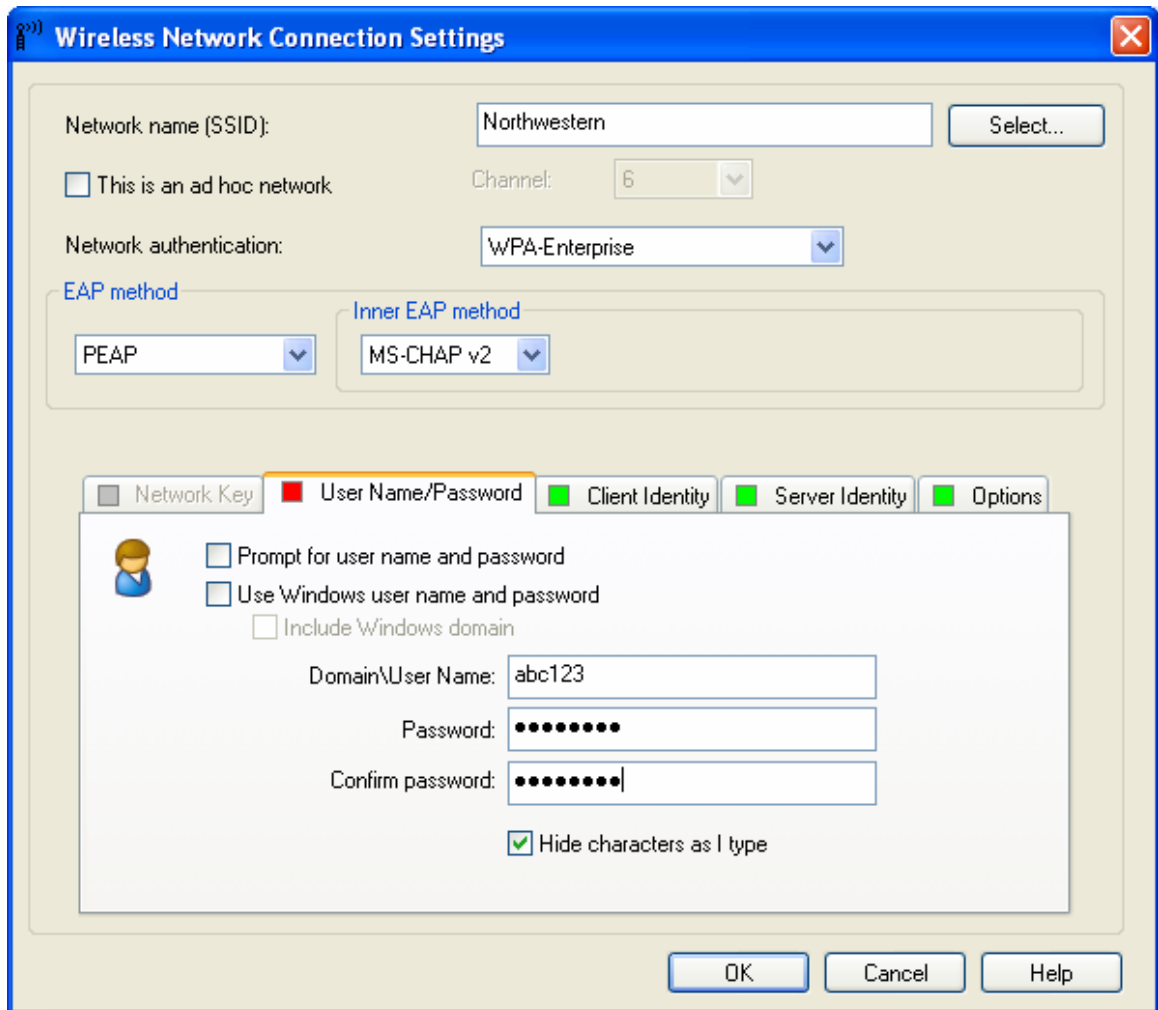


Dell TrueMobile Wireless Password Change

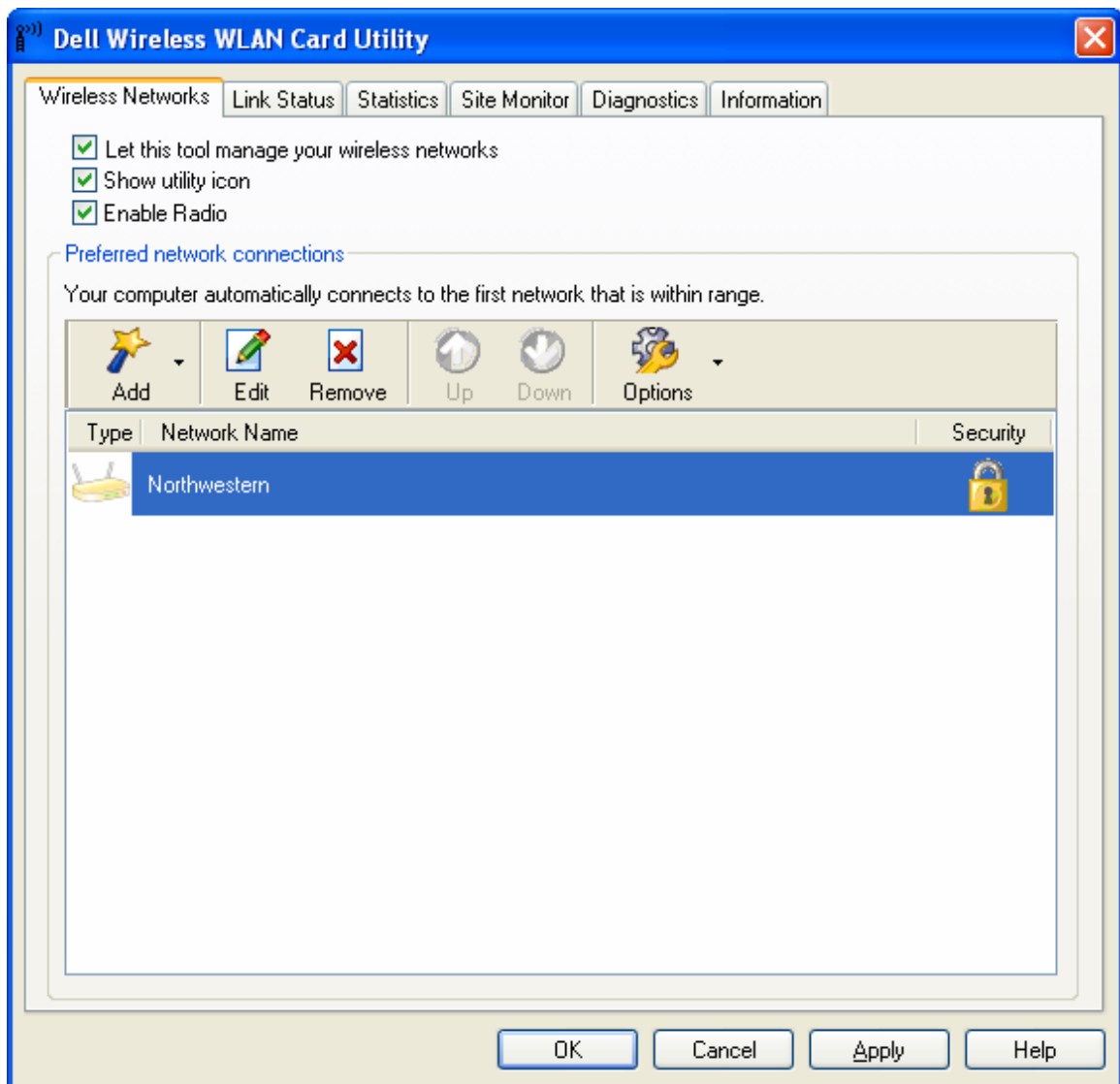
1. Right click the icon with four bars on the right-hand side of the Task Bar and select *Open Utility*.



2. Highlight *Northwestern* and click *Edit*.



3. Click on the *User Name/Password* tab and type the new password in the *Password* box. Then re-type the password in the *Confirm Password* box.
4. Click the *Server Identity* tab and check the box that says *Validate Server Certificate*.



5. Click the arrow next to *Options* and select *Advanced*. Make sure the settings are on *Access Points (Infrastructure)*.
6. Click on **OK** and you are set.