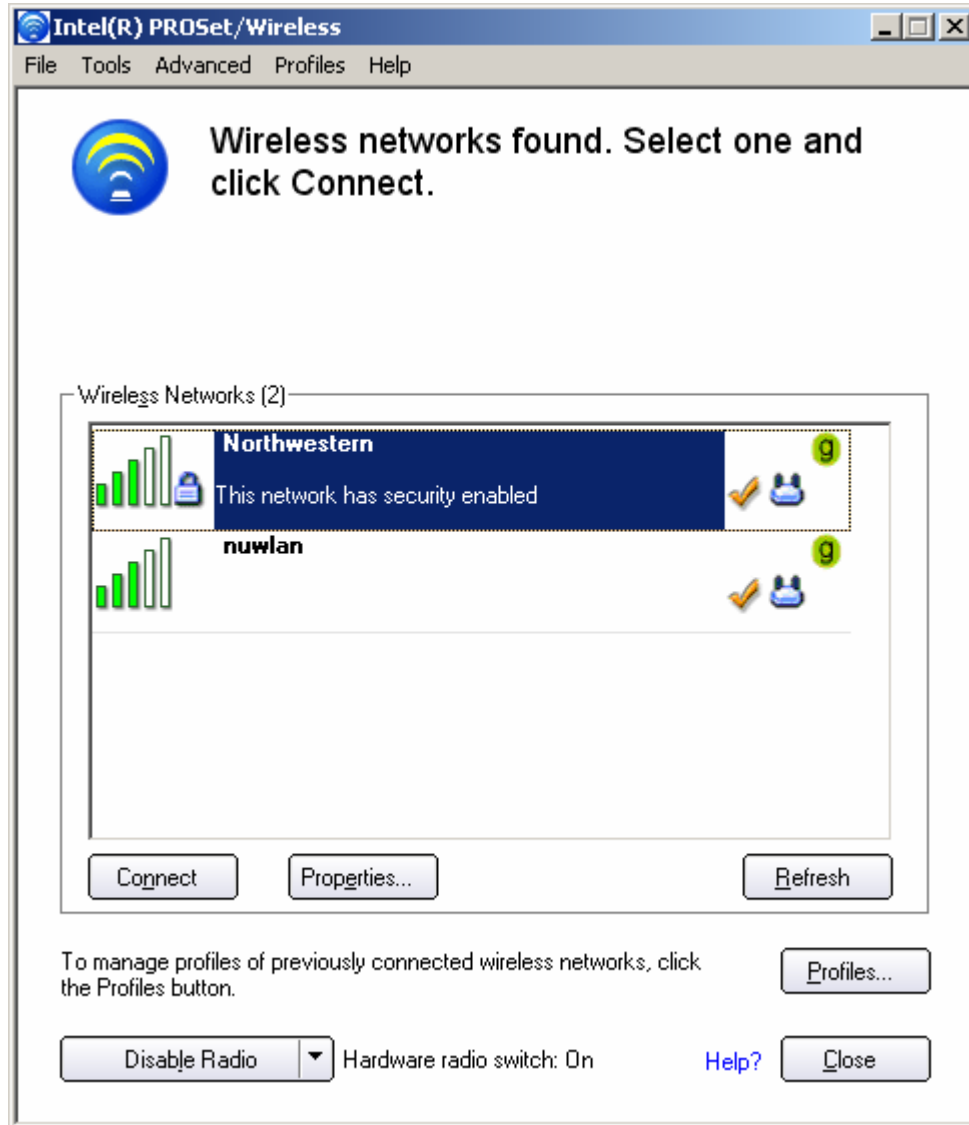
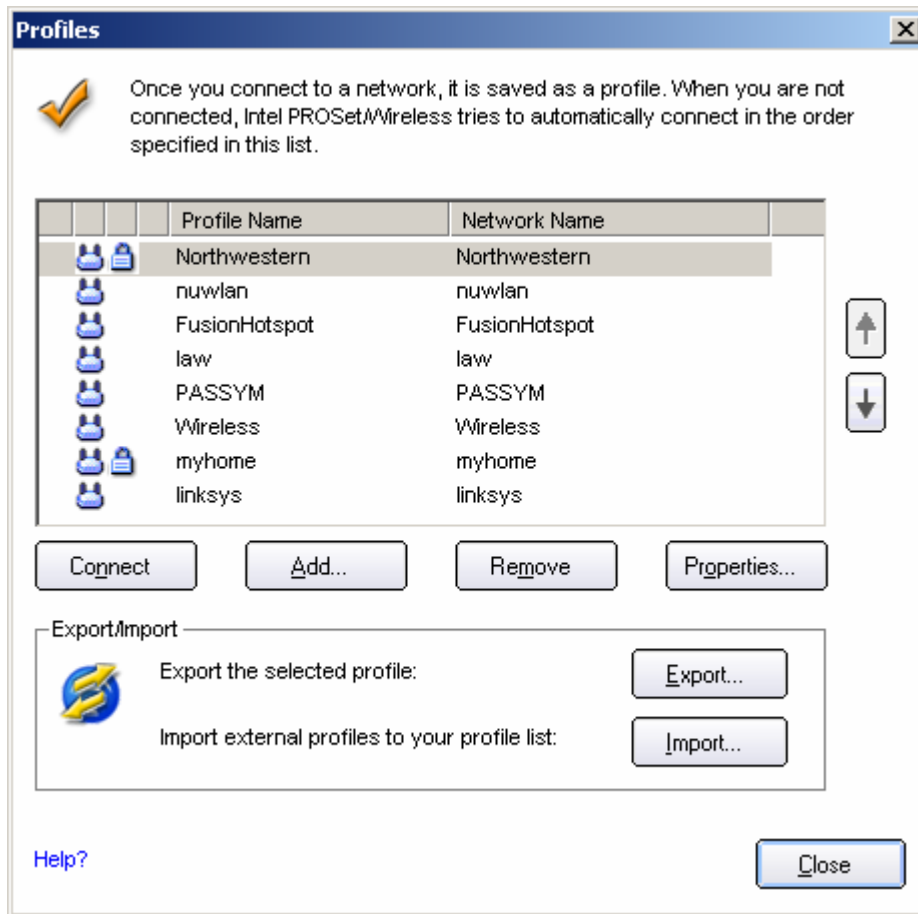


Intel PROSet Wireless Password Change

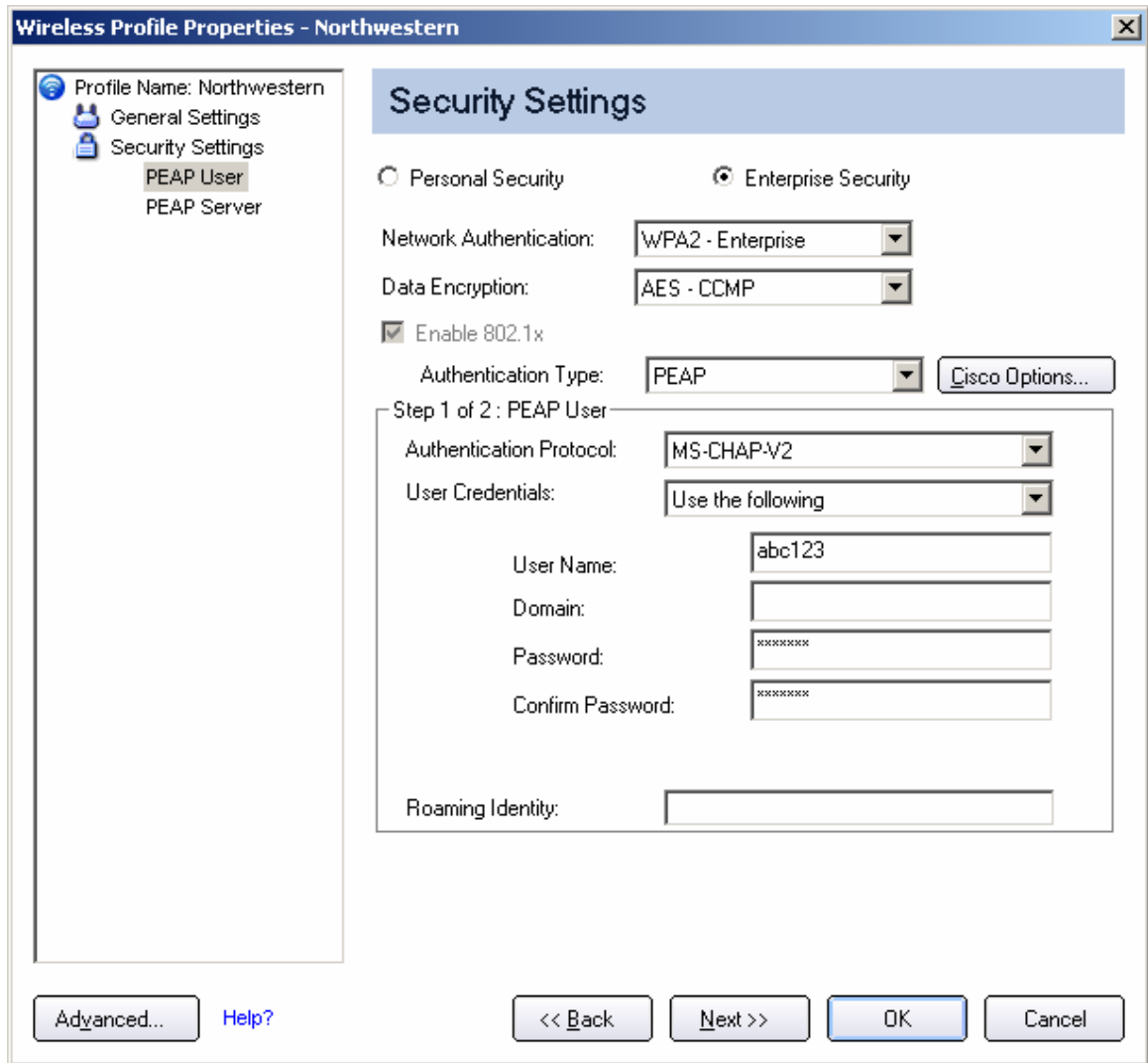
1. Right-click on fan-shaped icon at the right side of the taskbar and select *Open Intel PROSet/Wireless*.



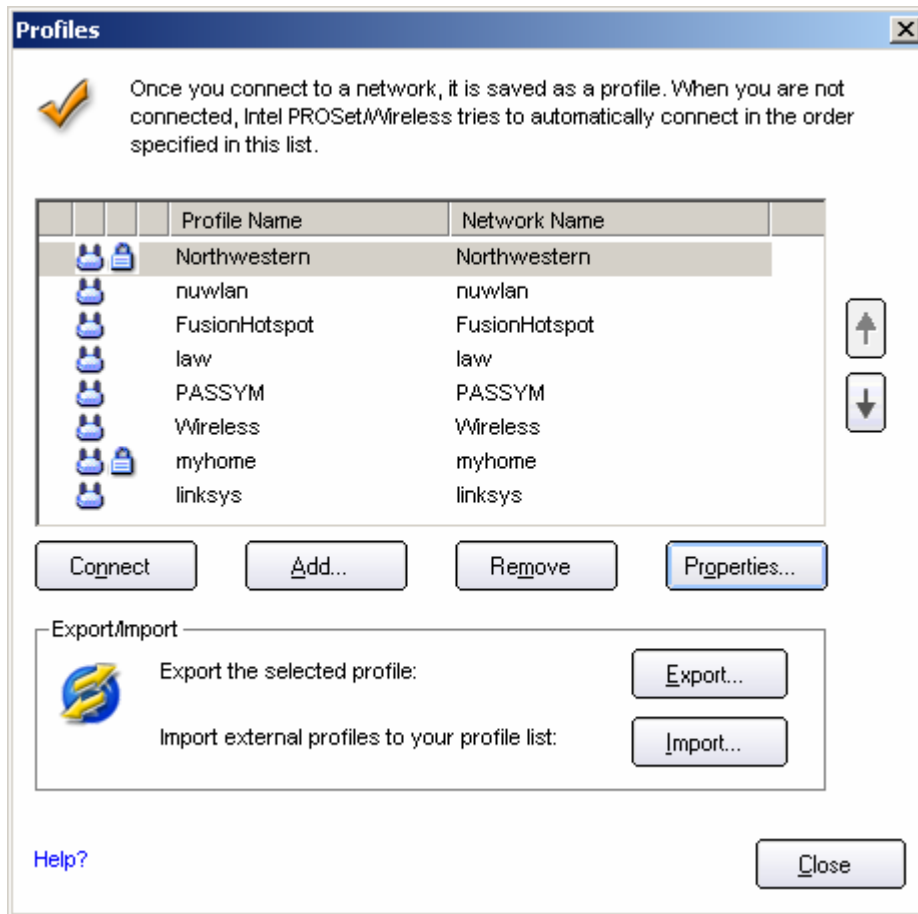
2. Select *Northwestern* and then click *Profiles*.



3. Highlight *Northwestern* and click on *Properties...*



4. Under **Profile Name: Northwestern** click on **PEAP User**. On the right side in the **Password** box, update your password. **Confirm** the password and click **OK**.



5. Click on **Connect** and you should be connected to Northwestern wireless.