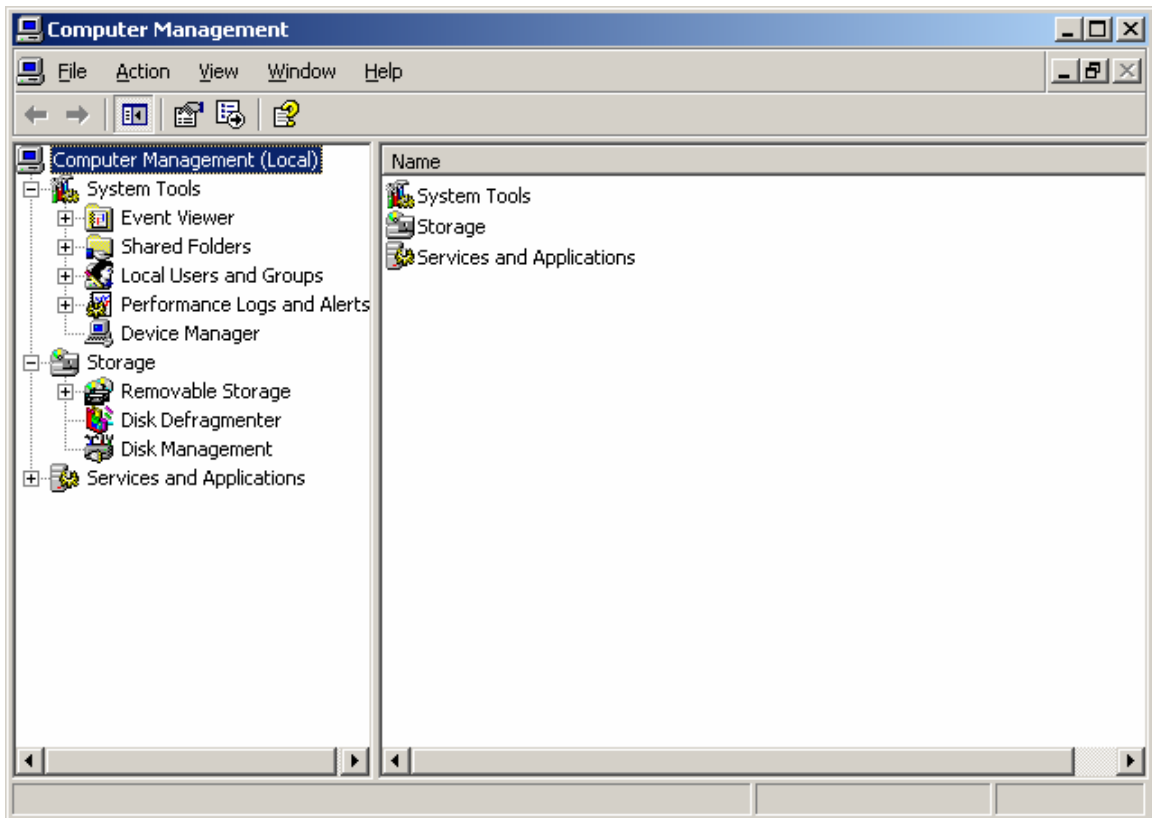




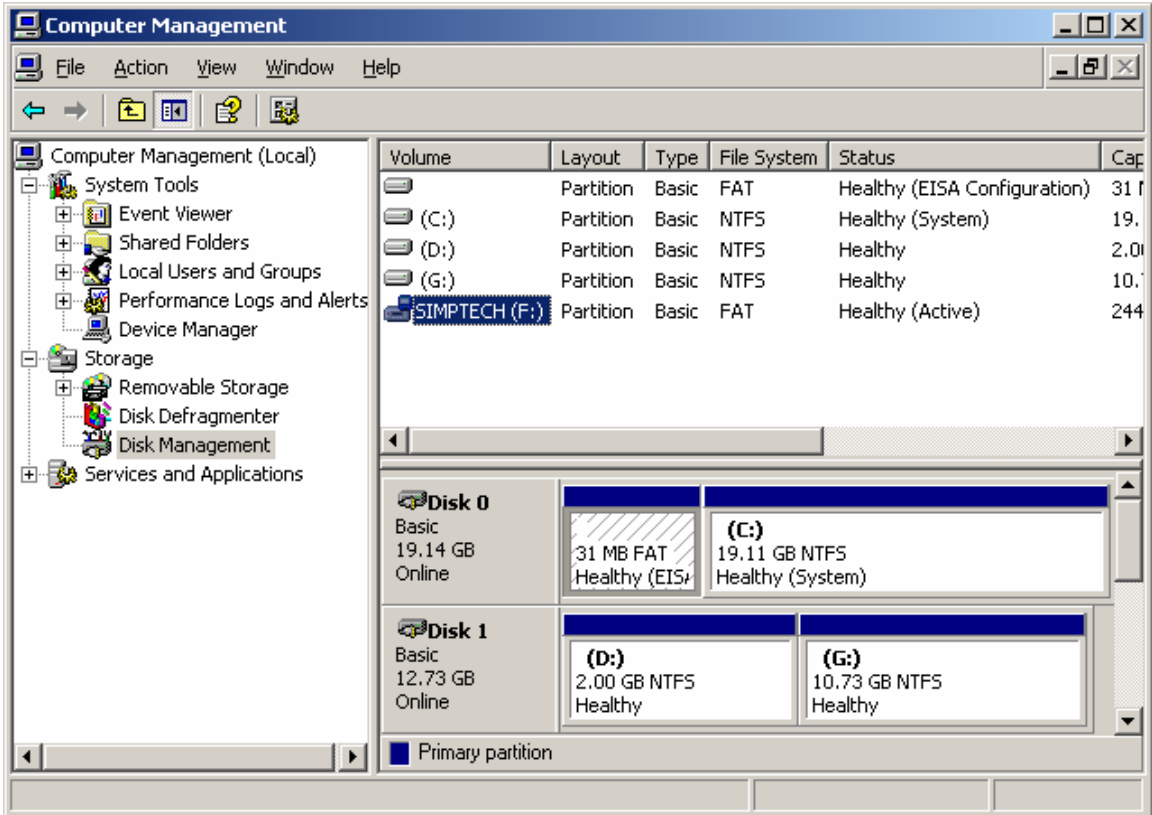
NORTHWESTERN UNIVERSITY SCHOOL OF LAW

## Configuring Memory stick/USB stick

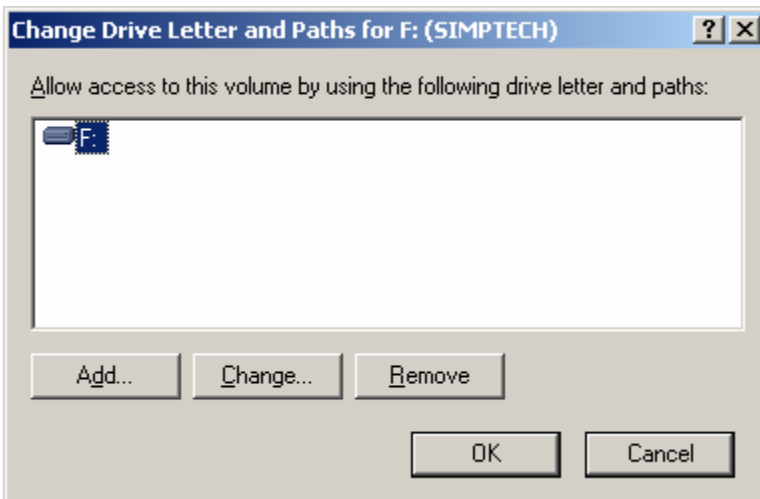
1. Right Click on **My Computer** and left click on **Manage**.



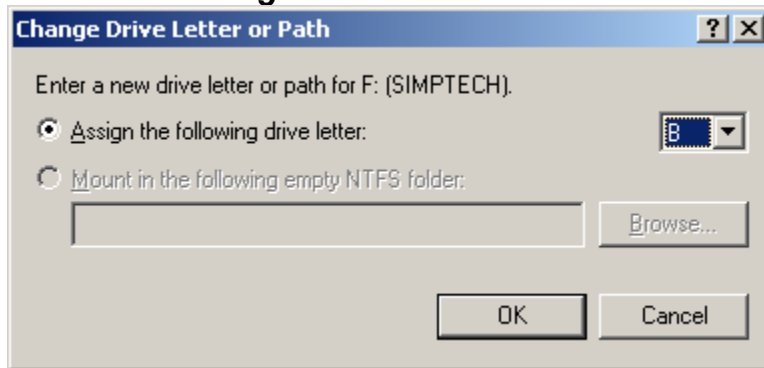
2. Click on **Disk Management**



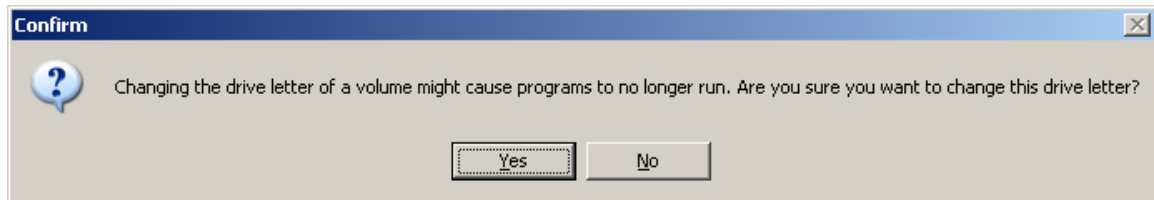
3. Under Volume field, right click on memory stick (look for the brand name) and click on **Change Drive Letter and Patches...**



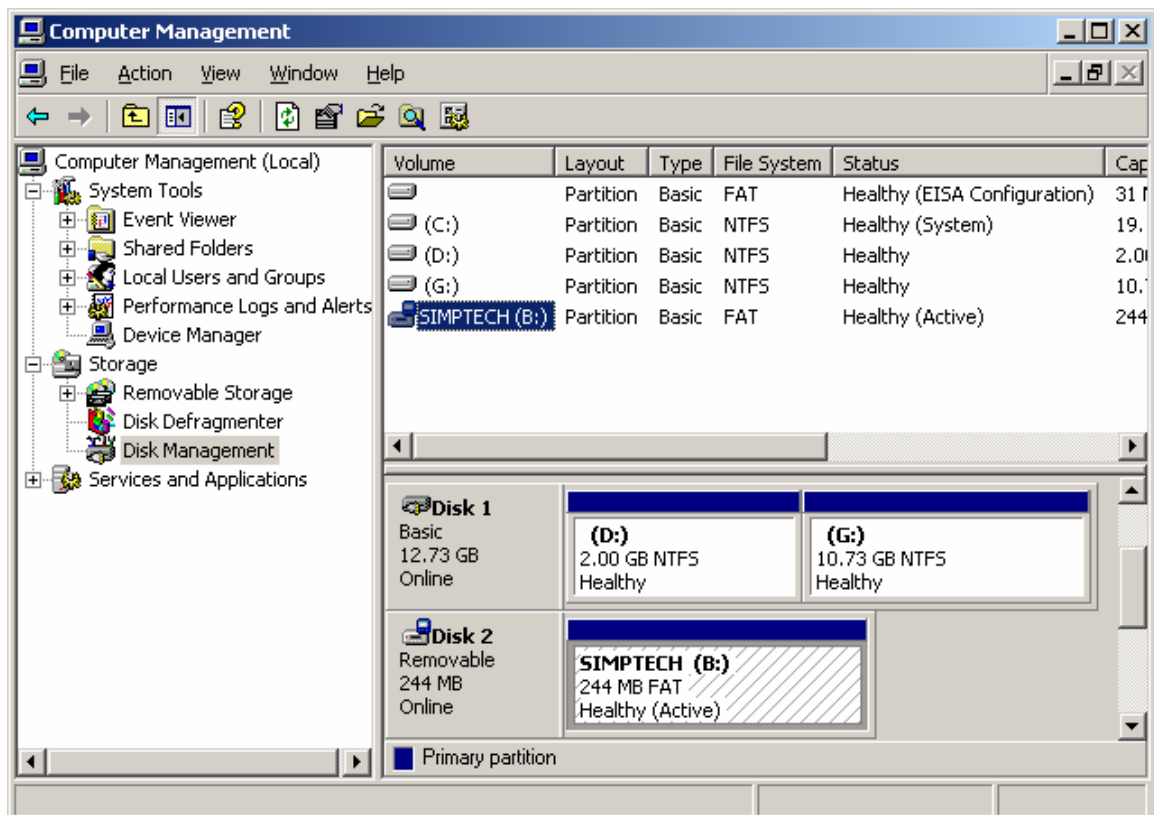
4. Click on **Change**.



5. **Change Assign the following drive letter: B** and Click on **OK**



6. Click **Yes**



The memory stick is now assigned to Drive letter B  
Click on the upper left corner x will close the **Computer Management** window.