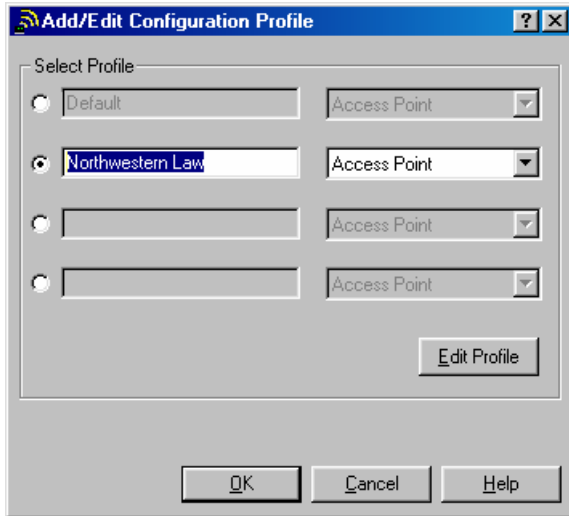
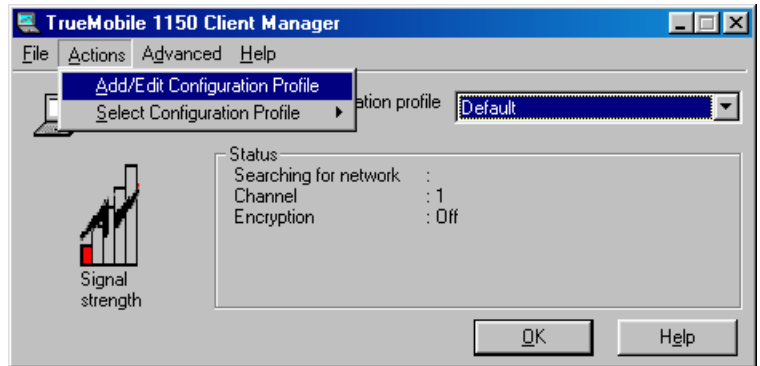


Configuring Dell TrueMobile Wireless Card for NULaw Network

Open the Dell TrueMobile Client Manager utility, then click Actions, then Add/Edit Configuration Profile.

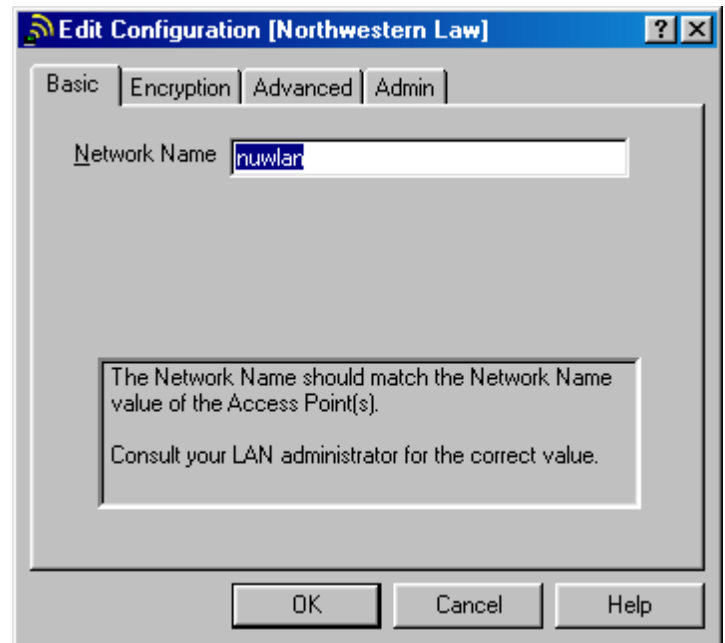


Click the circle in front of the second profile box and then type a name for the profile, such as Northwestern Law. (Any name will do, just something to indicate to you that this profile is for the Law School's wireless network.)

Then click the Edit Profile button.

In the Network Name box, enter nuwlan. (This must be typed in lower case.)

Then click OK.



Be sure the Current configuration profile box lists the profile you've just created.

Click OK.

