

## Northwestern University Electricity Dialogue on The State-RTO Partnership: Policies, Markets, Reliability & the Energy Transition

### Biographies



**MANU ASTHANA** oversees the largest power grid in North America and one of the largest electricity markets in the world. He is responsible for the reliable operations, competitive markets and transmission planning for the organization serving 65 million people in 13 states and the District of Columbia.

Asthana joined PJM in January 2020. Under his leadership, he has implemented significant risk management reforms and established a clear path for defining the grid operator's role in the energy transition to a cleaner, more efficient grid while maintaining reliable electric service.

Asthana has extensive leadership experience, including 21 years across the electricity industry, including power generation operations, optimization and dispatch, competitive retail electricity, electricity and natural gas trading, and risk management.

Prior to joining PJM, he served as president of Direct Energy Home in North America. He previously led power generation operations and energy trading at Direct Energy, and at the TXU group of companies, where he served as chief risk officer while also leading the energy trading and generation optimization and dispatch area.

Asthana earned a Bachelor of Science in economics from The Wharton School at the University of Pennsylvania, where he was a Benjamin Franklin Scholar and a Joseph Wharton Scholar. He is active in the community, serving on the board of directors for The Chamber of Commerce for Greater Philadelphia and the Texas Children's Hospital Board of Trustees.



**LAUREN AZAR** provides legal services in the electric industry including business, regulatory and policy advice, as well as project advocacy and permitting. Among other things, she is currently assisting utilities to develop a path to deep decarbonization and working within the Midcontinent Independent System Operator (MISO) footprint to improve transmission planning and cost allocation. Azar currently sits on the U.S. Department of Energy's (DOE) Electricity Advisory Committee.

Azar served as the Senior Advisor to the DOE Secretary from 2011-13, advising him on the electric industry and its institutional barriers. She also co-led negotiations among nine federal agencies, to overhaul and streamline their evaluation of electric transmission.

From 2007-11, Azar was a Wisconsin Public Service Commissioner. As President of the Organization of MISO states, in 2009, Azar chaired both the regulator and the MISO-stakeholder processes that resulted in the development of 17 multi-value projects (MVPs). In 2010, she organized the states and Canadian provinces east of the Rockies and led them through the first-of-its-kind planning in the Eastern Transmission Interconnection.



**JOHN R. BEAR** joined MISO in 2004 and has more than 30 years of executive leadership in the utility industry. As Chief Executive Officer of MISO since 2009, he leads MISO's continuous efforts to work collaboratively with its members to reliably deliver low-cost energy through efficient and innovative operations and planning.

Prior to his current position, Bear was MISO's President and Chief Operating Officer, overseeing the initial design, implementation and daily operation of MISO's energy markets and transmission system planning.

Previously, Bear was President of Houston-based Reliant Resources as well as serving as Managing Director of Reliant's European Operations.

Bear is currently Vice President of the GO15, the world's largest power market and grid operators. The GO15 shares knowledge on key issues representing more than 75% of the world's electricity demand on six continents.

He serves as Board Chairman of the Energy Systems Network (ESN), an initiative focused on building an energy ecosystem that integrates all aspects of the energy landscape to develop clean energy solutions. He also serves on the board of the

Electric Power Research Institute (EPRI), a non-profit which focuses on energy and environmental research. Bear is also a member of the Governance Board of the Ohio, Kentucky and Indiana Chapter of the Make-A-Wish Foundation and the Indiana Fire Academy Soccer Club.

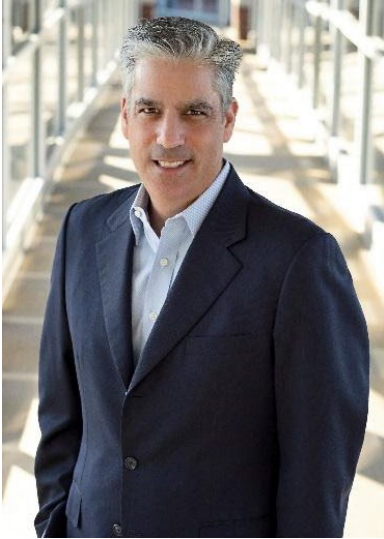
He has served on the President's Nuclear Energy Advisory Committee, is a former Board member of the NERC regional entity ReliabilityFirst, and a founding board member of the Amsterdam Power Exchange (APX).

Bear graduated from Southern Methodist University with a Master of Business Administration degree and a Bachelor of Business Administration degree. He attended the INSEAD Advanced Management Program for Senior Executives.



**BETSY ROSENBLATT BECK** is a leader in the energy industry with nearly 15 years of experience in government and the private sector. For the past two years, she has led energy policy and market development for the central US at Google, where she is responsible for developing and executing Google's energy strategy in support of its data centers and carbon-free energy goals. In her previous role, she was the Senior Director of Energy Policy and Markets at Enel, where she led the organization's energy policy and regulatory work in the Central and Western US. Betsy is a passionate advocate for the use of carbon free energy and

has successfully advocated for policies to promote its development and deployment. She is also a strong believer in the role that technology can play in the modernization and decarbonization of our energy systems. Betsy is a frequent speaker on transmission and market design policy and renewable energy and holds a bachelor's degree in Engineering from the University of Pennsylvania. She lives in Minneapolis with her husband and two daughters.



**JEFF BLADEN** serves Meta Platforms as its Global Director of Energy. With 25 years of energy and technology management experience in the energy sector Mr. Bladen has broad responsibility for the development and execution of Meta's strategy for Reliable, Affordable and Sustainable energy across Meta's operations and supply chain. This includes Meta's recent efforts to drive grid-scale reliable and efficient decarbonization building on Meta's historic work meeting all its needs with 100% renewable energy. The energy team led by Mr. Bladen also leads the strategy development and execution of the energy components of the company's net-zero carbon goals for itself and its supply chain by 2030.

Mr. Bladen previously served in multiple executive roles at the Midcontinent Independent System Operator (MISO) as the executive director of digital strategy and executive director of system operations & market services. In those roles, Mr. Bladen oversaw enterprise technology strategy including the company's largest technology renewal program in its history. He also led the Market Services division where he was responsible for the strategic direction of MISO's markets including the design and the development of new products and market mechanisms to enhance reliable operations of the MISO region and marketplace along with day to day operations of the market settlements functions.

Prior to MISO, Mr. Bladen served as Vice President, head of department and leader of NV GL Energy's (formerly KEMA) Markets, Policy & Strategy Development practice for North America. In this position, Mr. Bladen led dozens of team engagements with clients on market issues, government policy and market design challenges for DNV GL Energy's wholesale and retail energy practice.

Before joining DNV GL, Mr. Bladen served as general manager of market strategy at PJM Interconnection where he managed PJM's market strategy subdivision directly overseeing departments focused on new market design, retail markets, demand response, alternative and renewable resources, and market economic analysis. Mr. Bladen also served as an original employee at New Energy Ventures where he helped to build one of the most successful competitive retail electricity businesses in North America; today it is known as Constellation Energy.

Mr. Bladen holds a Masters of Business Administration with honors from the Stern School at New York University and a Bachelor of Arts degree from the Maxwell School of Public Affairs at Syracuse University.



**SETH BLUMSACK** is Professor of Energy and Environmental Economics and International Affairs in EME and Director of the Center for Energy Law and Policy. He is also on the External Faculty of the Santa Fe Institute. Dr. Blumsack's research centers on the electricity and natural gas industries; environmental management related to energy and infrastructure; resilience of energy infrastructure; regulation and deregulation in network industries; network science; risk analysis; and managing complex infrastructure systems. He has been studying the electric power industry through academic and consulting affiliations for more than fifteen years. He has authored or co-authored more than fifty scientific papers; book chapters; and articles in industry and popular press, with research funding from the U.S. National Science

Foundation, Department of Energy, Environmental Protection Agency, and private industry. He has consulted with the American Public Power Association, Bayer Materials, the Congressional Research Service, the Consortium for Risk Assessment and Stakeholder Participation, the National Renewable Energy Laboratory, the Idaho National Laboratory, the U.S. Department of Energy, the U.S. Environmental Protection Agency and numerous electric utilities and State Public Utility Commissions.



**MICHAEL BRYSON** is responsible for PJM's Operations Division, overseeing 24/7 transmission operations for real-time systems. This includes scheduling, transmission dispatch, generation dispatch, reliability coordination, training and all engineering analysis required to run the system and support the critical energy management systems.

Bryson serves on the board of PJM Technologies Inc. and was formerly on the board of directors of the ReliabilityFirst Corporation. Bryson is a member of the ISO/RTO Operating Committee as well as a past member of the Consortium for Electric Reliability Technology Solutions. Bryson serves on the National Association of Regulatory Utility Commissioners (NARUC) Gas-Electric Alignment for Reliability initiative, also known as GEAR. Bryson is also currently the board chair of The House, a Women's Outreach in Phoenixville, Pennsylvania, and was the former chair of the board of Pope John Paul II High School.

Prior to joining PJM, Bryson held various senior-level positions with DIMAC DIRECT Inc. in St. Louis, including vice president of information services, manager of operations and technical services, and manager of applications development.

Bryson has nearly 10 years of military experience as a pilot. His responsibilities in the United States Army included operations planning and support, supervision and training of pilots and mechanics, and training and maintenance of tactical computer systems. He was awarded the Bronze Star for Combat Service in Desert Storm.

Bryson earned a Bachelor of Science in general engineering from the United States Military Academy at West Point, New York, focusing on computer science and electrical engineering, and has a Master of Business Administration from Saint Joseph's University in Philadelphia. Bryson also earned a graduate certificate in power engineering from the Worcester Polytechnic Institute.



**KENT A. CHANDLER** was appointed to the Public Service Commission by Governor Andy Beshear on July 6, 2020, and designated as Chairman on August 3, 2021. His term expires June 30, 2024.

Prior to his appointment, he served as Executive Director of the PSC, implementing the programs of the commission, and directing its staff. Previous to becoming Executive Director, he was an advisor to the commissioners, focusing on federal wholesale gas and electricity markets.

Before coming to the PSC, Chairman Chandler advocated for Kentucky ratepayers as an attorney in the Kentucky Attorney General's Office of Rate Intervention. In that position, he regularly represented consumers before the PSC in electric, gas, water and sewer utility cases and also served on the executive committee of the Consumer Advocates of the PJM States.

Chairman Chandler is a member and co-vice chair of the National Association of Regulatory Utility Commissioners' (NARUC) Committee on Electricity, serves on the NARUC board of directors, and represents the Mid-Atlantic region on NARUC's executive committee. He serves on the EPRI advisory council and is president of the Organization of PJM States. He is a member of the Southeastern Association of Regulatory Utility Commissioners and the Mid-Atlantic Conference of Regulatory Utilities Commissioners, where he serves as president. Chairman Chandler also represents states on the North American Electric Reliability Corporation's (NERC) Member Representatives Committee. Chairman Chandler, a native of Providence, Kentucky, earned a Bachelor of Science in finance from Murray State University. He received a Juris Doctor from Northern Kentucky University's Salmon P. Chase College of Law.



**TONY CLARK** As a former FERC Commissioner, a Chairman and Commissioner of the North Dakota Public Service Commission, a former President of the National Association of Regulatory Utilities Commissioners, the Labor Commissioner of North Dakota, and a member of the North Dakota House of Representatives, Tony is a nationally recognized thought leader in energy policy who draws on years of government service to provide clients with analysis and strategic advice on a variety of regulatory and public policy matters affecting their businesses. His tenure on the North Dakota Commission coincided with the

state's historic emergence as a leader in energy production.

He primarily works with clients in the energy and telecommunications industries, speaking frequently before groups regarding the state of the utility industry and the public policies that impact it. He has also testified multiple times before Committees of the U.S. Senate and the U.S. House, state legislators and regulatory commissioners.

Tony Clark provides clients with expert analysis and strategic advice on regulatory matters affecting their businesses. His clients include entities engaged in the production and delivery of energy, and regulated telecommunications companies. In addition to providing inward-facing consulting services, he has represented client interests as a subject matter expert before regulatory agencies and state legislatures. Having served as both a state and federal regulatory commissioner, and as a former President of the National Association of Regulatory Utility Commissioners, Mr. Clark brings an unparalleled understanding of the nexus of state and federal utility regulation.



**DANA GUERNSEY** is a leading expert in global energy markets and brings fifteen years of experience developing virtual power plant and demand-side energy management products and first-of-its-kind programs to her role as Chief Executive Officer. Previously, as Chief Product Officer, Dana led the development of Voltus's technology-enabled distributed energy resource platform, which connects Voltus's customers and technology partners to the value that they can extract from their local energy markets, while contributing to a more resilient and decarbonized electric grid.



**MARCUS HAWKINS** was appointed by Governor Tony Evers to serve as a Commissioner on April 8, 2024. Prior to joining the PSC, Marcus was the Executive Director of the Organization of MISO states (OMS), a regional association of state utility commissions, where he represented state interests before the regional grid operator and Federal Energy Regulatory Commission. Previously, Marcus was a Senior Engineer at the PSC within the Division of Regional Energy Markets. He has additional experience working at Wisconsin Energy Conservation Corporation and PA Consulting Group.

Marcus holds a bachelor's degree in nuclear engineering and a master's degree in mechanical engineering from the University of Wisconsin – Madison, where he also earned certificates in Technical Communication and Energy Analysis and Policy. Marcus lives in Madison with his partner Fred.



**DARCIE L. HOUCK** was appointed to the California Public Utilities Commission (CPUC) by Governor Gavin Newsom on Feb. 9, 2021. She formerly served as Chief Counsel for the California Energy Commission since 2019.

Commissioner Houck was an Administrative Law Judge at the CPUC from 2016 to 2019, a Partner at Fredericks Peebles & Morgan from 2005 to 2016, and Staff Counsel and Policy Advisor at the California Energy Commission from 2000 to 2005.

Commissioner Houck has expertise in matters concerning environmental equity, nuclear energy regulation, and safety policy. She has an extensive background representing Native American tribes throughout the country on matters involving energy, natural resources, land claims, and water rights, among others.

Commissioner Houck is a member of the California Indian Law Association, California Lawyers Association, Schwartz-Levi Inn of Court, Women Lead and the Association of Women in Water, Energy, and Environment. She earned a law degree from the University of California, where she also earned a Master of Science in community development.





**JOSHUA C. MACEY** teaches and writes about bankruptcy, environmental law, energy law, and the regulation of financial institutions. He is the three-time winner of the Morrison Prize for most influential environmental law article of the previous year ("Zombie Energy Laws," 73 *Vanderbilt Law Review*; "Long Live the Federal Power Act's Bright Line," 134 *Harvard Law Review*; "Clean Energy Through Grid Reliability," 74 *Stanford Law Review*).

Professor Macey graduated from Yale College, the London School of Economics, and Yale Law School. He has worked at Morgan Stanley and clerked for Judge J. Harvie Wilkinson III on the Court of Appeals for the Fourth Circuit.



**LANNY NICKELL** As executive vice president and chief operating officer, Lanny Nickell is responsible for SPP's provision of engineering, operations, and information technology services to members and customers. These services include coordination of reliable power system operations, development, design and administration of energy markets, development of transmission expansion plans needed to facilitate delivery of reliable and affordable energy to consumers, and administration of resource adequacy policies.

Nickell began his career as a planning engineer for Public Service Company of Oklahoma. He joined SPP in 1997 as an operations engineer where he helped establish SPP's reliability coordination and tariff administration functions. He was promoted to the management team in 1998, became vice president of operations in 2008, vice president of engineering in 2011 and senior vice president of engineering in 2019. Throughout his career, he has served on numerous industry committees developing national and regional electric reliability and energy market policies. Nickell currently serves as staff secretary for SPP's Markets and Operations Policy Committee and participates in numerous community and philanthropic boards.

Nickell received a Bachelor of Science degree in Electrical Engineering from the University of Tulsa and is a graduate of Harvard Business School's Advanced Management Program. He is married and has four children.



**ELLEN NOWAK** is vice president of state and federal affairs. She leads ATC’s legislative and regulatory affairs at the state and federal levels including developing policy positions before the Federal Energy Regulatory Commission and state public utility commissions.

Nowak joined ATC in 2023 with more than 20 years of experience in energy and public policy. Prior to joining ATC, she served as a commissioner at the Public Service Commission of Wisconsin, including three years as chairperson. She also served as secretary of the Department of Administration and acted as chief of staff of legal counsel to the assembly speaker. Nowak previously practiced law at a business litigation firm.

In addition to her regulatory, administrative and legal experience, Nowak has served on and chaired several boards and committees related to energy industry including the National Association of Regulatory Utility Commissioners, Mid-America Regulatory Conference, the Advisory Council to the Board of Directors for the Electric Power Research Institute, and the Advisory Committee for the Critical Consumers Issues Forum.

Ellen earned a Bachelor of Science from the University of Wisconsin–Milwaukee and a Juris Doctor from Marquette University.



**JULIE PIERCE**, Vice President Strategy and Planning for Minnesota Power is responsible for long term strategy development. This area includes integrated utility planning, project development, new technology origination, customer power supply marketing and Regional Transmission Organization coordination, all to position and meet Minnesota Power customer requirements. Her time with the company has allowed her to have a senior executive and leadership role in developing and executing its EnergyForward strategy that has transformed Minnesota Power to a renewable energy leader in the Midwest.

Her strategic leadership expands to the broader ALLETE organization as the executive sponsor for the ALLETE Large scale transmission development activities that are currently expanding interregional transmission corridors through collaborative work with other electric sector partners including new High Voltage Direct Current (HVDC) technologies. Julie has worked in the Strategy and Planning area for Minnesota Power for 16 years.

Before moving to Duluth with her husband in 2007, Ms. Pierce worked 8 years with the Midwest ISO in the reliability and market operations areas. She was responsible for departments that conducted real time grid reliability evaluations and broad engineering support for the Reliability Coordination operations center and assisting with the implementation of the Day Ahead and Real Time energy markets.

Active in her community and passionate about education, Ms. Pierce is the serving as Past President of the Board of Trustees for Marshall School, and independent school located in Duluth, MN and serves on the Board of Governors for the School of Engineering at St. Thomas University in St. Paul, MN. She supports the economic development and employment in Minnesota as a Vice President and Board member on the Duluth 1200 Fund that promotes new business and employment in the region.



**LAURA RAUCH** is the executive director of transmission planning at MISO. In this role, she leads all aspects of transmission planning, including regional and interregional reliability and economic planning, cost allocation, and competitive transmission assessment.

Laura has more than 18 years in the energy industry, with experience spanning planning and market functions. This included leadership roles in market and transmission settlements, resource adequacy, and reliability planning. Laura has helped shape MISO's response to multiple technical and policy initiatives, including leading the market workstream for MISO's response to FERC Order 2222 on Distributed Energy Resources, developing market and operational solutions for resource adequacy, defining MISO's developer selection process in response to FERC Order 1000, and leading the business case for MISO's initial Multi-Value Project portfolio to demonstrate the economic, reliability, and other benefits of transmission in supporting state policy mandates.

While at MISO, Laura has championed our diversity, equity, and inclusion program and other cultural work. She is a former chair of the MISO Women's Resource Group and is currently cosponsoring MISO's Leadership Development Initiatives.

Laura holds a Master of Business Administration from Indiana University and a Bachelor of Science degree in electrical engineering from Michigan Technological University. She is a registered engineer in the state of Indiana.



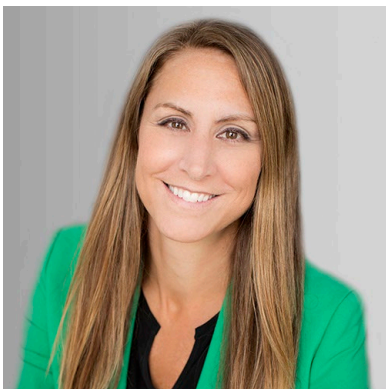
**ANN RENDAHL** was first appointed to serve as a commissioner of the Washington Utilities and Transportation Commission by Gov. Inslee in December 2014 for a six-year term that ended Jan. 1, 2021. Ann has been reappointed and confirmed to a second six-year term ending Jan. 1, 2027.

Ann is a member of the National Association of Regulatory Utility Commissioners, or NARUC, Committees on Electricity and Critical Infrastructure, prior chair of the Committee on Electricity, a member of the Executive Committee, and serves on the Board of Directors.

Ann serves as a member of the Body of State Regulators for the California ISO's Energy Imbalance Market. Ann also serves as a member of the Electric Power Research Institute's Advisory Council through August 2025, and as a member of the Advisory Council of the Center for Public Utilities at New Mexico State University.

Ann previously served as the Director of Policy and Legislation for the UTC. Prior to leading the UTC's Policy and Legislative Affairs Section, she served as the Director of the Administrative Law Division, as an administrative law judge for the UTC, and as an assistant attorney general representing the UTC.

Ann is a graduate of Wellesley College and received a master's degree in Public Policy from the Goldman School of Public Policy at the University of California, Berkeley. She received her law degree from UC Law San Francisco.



**AMANDA ROME** is Executive Vice President and Group President - Utilities, Chief Customer Officer and General Counsel (interim) with responsibility for the overall strategy and execution of each of Xcel Energy's four operating companies as well as the customer-facing organizations including Clean Transportation, Customer Solutions and Innovation and Customer Care. In her previous role as Chief Legal and Compliance Officer, she was responsible for the company's law department and overall legal strategy. Previously she served as vice president, deputy general counsel where she led the company's Regulatory,

Commercial and Environmental Groups across all jurisdictions. Rome was previously the head regulatory attorney for Xcel Energy nationwide with responsibility for all federal and state regulatory jurisdictions. Rome started at Xcel in 2015 as the lead regulatory attorney for Xcel Energy's northern jurisdictions. Prior to joining Xcel Energy, she worked as a federal court litigator at Winston & Strawn in Chicago and Faegre Baker Daniels in Minneapolis. Rome has served on several Boards, including the Executive

Boards of Twin Cities Diversity in Practice and the 2022 Women's Basketball Final Four. Rome currently serves on the Advisory Board of the University of Idaho Energy Executive Course. Rome also serves on the Board of Directors for Energy Insurance Mutual.

Rome attended Penn State University where she was the starting outside hitter on a Penn State Women's Volleyball team that won the Division I National Championship. After graduating from Penn State, Amanda received her law degree from the Georgetown University Law Center.



**DOUG SCOTT** was appointed Chair of the Illinois Commerce Commission by Governor J.B. Pritzker on June 17, 2023. This is Scott's second stint as Chair, having served in that position from 2011-2015. Between engagements with the ICC, Scott was Vice President of the Great Plains Institute, where he worked on decarbonization efforts with States, utilities and other interested parties. His team at GPI focused on utility business models, transmission and clean energy/climate plans. As part of that work, Scott served as an advisor to the Illinois Governor's Office on energy and environmental issues, including development of the Climate and Equitable Jobs Act.

Before his first session with the ICC, Scott served in a variety of public sector positions for over twenty-five years, including Director of the Illinois Environmental Protection Agency, Mayor of the City of Rockford, State Representative and City Attorney for Rockford. A native of Rockford, Scott received his Bachelor of Arts with honors from the University of Tulsa, and a Juris Doctorate with honors from Marquette University.

Doug and his wife Tammy have been married since 1985 and reside in South Beloit, Illinois.



**SALLY TALBERG** is president of Talberg Policy Solutions, a regulatory and energy policy consulting firm founded in 2021. She also serves on the New York ISO Board of Directors and is a senior policy fellow with Public Sector Consultants.

Sally served on the Michigan Public Service Commission (MPSC) from 2013 through 2020 during a time of significant transformation of the state's energy and telecommunications industries, with over four years as

chair. As a commissioner, Sally served on numerous other state, regional, and national boards and committees addressing electricity, natural gas, oil, infrastructure, and telecommunications issues. She oversaw the MPSC's successful implementation of bipartisan energy reform laws and MI Power Grid, a regulatory reform initiative to support the transition to clean, distributed energy resources.

Prior to serving on the MPSC, Sally co-led the development of Michigan Saves, a nonprofit green bank that has financed over \$500 million in residential and small commercial clean energy projects. Sally also previously served as a commission policy advisor at the Public Utility Commission of Texas and the MPSC.

Sally holds a Bachelor of Science in Environmental and Natural Resources Policy Studies from Michigan State University and a Master of Public Affairs from the University of Texas at Austin.



**DUSKY TERRY** is Vice President, ITC Holdings Corp. and President, ITC Midwest and ITC Great Plains. Mr. Terry joined ITC in 2019, and serves as the Business Unit Lead providing leadership and strategic direction for ITC Midwest and ITC Great Plains.

A lifelong Iowan, Mr. Terry spent the first half of his career in the public policy arena before joining Central Iowa Power Cooperative (CIPCO), an electric generation and transmission cooperative, in 2008, as Public Affairs Strategist. He was promoted to Vice President in 2013 and led a team responsible for CIPCO's business development, wholesale ratemaking, and marketing/energy efficiency programs. His responsibilities expanded to include load forecasting and long-term resource planning where he played a key role in the deployment of CIPCO's recent utility-scale solar projects. Prior to CIPCO, he served in Iowa Governor Tom Vilsack's office as an Adviser and Policy Director working to advance the Governor's policy agenda.

Mr. Terry currently serves as Chair of the Iowa Utility Association Board of Directors. An active community volunteer, Mr. Terry previously served as President of the Earlham Lions Club and two terms as Mayor of Earlham, Iowa. He also held leadership positions on the Better

ITC Holdings Corp. is the largest independent electricity transmission company in the United States. ITC provides transmission grid solutions to improve reliability, expand access to markets, allow new generating resources to interconnect to its systems and lower the overall cost of delivered energy. Business Bureau of Iowa Board, Madison County Development Group Board, and Greater Madison County Community Foundation Board.

Mr. Terry earned a Bachelor of Arts in public administration from the University of Northern Iowa. He is based at ITC Midwest's regional office in Des Moines.



**SUSAN TIERNEY** is an expert on energy economics, regulation, and policy, particularly in the electric and gas industries. She has consulted to businesses, federal and state governments, tribes, environmental groups, foundations, and other organizations on energy markets, economic and environmental regulation and strategy, and energy projects. She has testified before Congress, state and federal regulatory agencies, and federal and state courts. Previously, she served as the Assistant Secretary for Policy at the U.S. Department of Energy. In Massachusetts, she was the Secretary of Environmental Affairs, Commissioner at the Department of Public Utilities, Chairman of the Board of the Massachusetts Water Resources Authority, and Executive Director of the Energy Facilities Siting Council. She earned her Ph.D. and M.A. in

regional planning at Cornell University.

Dr. Tierney has authored numerous articles, taught at the Department of Urban Studies and Planning at MIT and at the University of California at Irvine, and lectured at Harvard, Yale, New York University, Tufts, Northwestern, and University of Michigan. She chairs the Board of Resources for the Future. She is a trustee of the Barr Foundation, the Alfred P. Sloan Foundation, the Coalition for Green Capital, and World Resources Institute. She is a member of the advisory councils at New York University's Policy Integrity Institute and of the New York Independent System Operator (NYISO), and participates in the Keystone Center's Energy Board meetings. She is a member of the National Academies of Sciences, Engineering and Medicine's (NASEM) Committee on Accelerating Decarbonization in the U.S., and their Climate Crossroads Advisory Council. She was a member of the NASEM's Committee on the Future of Electric Power and the Committee on Enhancing the Resilience of the Nation's Electric Power Transmission and Distribution System. She chairs the External Advisory Council of the National Renewable Energy Laboratory (NREL), previously chaired DOE's Electricity Advisory Committee, and has assisted the North American Energy Standards Board (NAESB) in its Gas-Electric Harmonization Forums. In 2020 was designated as a lifetime National Associate of the National Research Council of the National Academies.



**JOHN TUMA** was initially appointed to the Public Utilities Commission by Governor Mark Dayton, effective February 2, 2015. He was reappointed by Governor Tim Walz on March 30, 2021 and confirmed on May 12, 2023. Commissioner Tuma has served as the Commission liaison with the State's regulated utilities regarding cyber security protocols. He also represents Minnesota and serves as President of the Regional State Committee of the Southwest Power Pool, the regional transmission organization for Western Minnesota and several other states of the Great Plains. He takes an active role in the Commission's operations and budgeting along with serving as chairman of the Staff Wellness Committee. He also serves on the NARUC Committee on Telecommunications. Prior to his appointment, Commissioner Tuma had decades of experience working on energy and conservation policy issues for a variety of nongovernmental organizations. Immediately prior to being named to the Commission, he served as a Government Relations Associate with Conservation Minnesota. He helped lead efforts to pass key energy legislation, including Minnesota's Mercury Emissions Reduction Act and Renewable Energy Standard – both of which garnered broad bipartisan support. He also served many other clients previously as a legislative policy liaison, most notably the Minnesota Inter-County Association covering areas of public safety and corrections.

Commissioner Tuma served in the Minnesota House of Representatives from 1995 to 2002, representing parts of Rice, Le Sueur, Scott, and Dakota counties. During his time in the House, he served as Chair of the Crime Prevention Committee and as Vice Chair of the Local Government Committee. While in the Legislature, Tuma was an active member of Judiciary Finance, Higher Education Finance, and Environment Policy committees. As a member of the House, Tuma was awarded Legislator of the Year by ARC of Minnesota, the state's largest disability organization; PACER, an organization defending the rights of the disabled in education; the Minnesota League of Conservation Voters; and the Women's Auxiliary of the VFW.

Commissioner Tuma has practiced law in Northfield, Minnesota in the areas of workers' compensation, criminal law, real estate, business organization and litigation, special education law, and personal injury litigation. He was Managing Attorney for Tuma and Thompson LLC from 1994 to 2001 in partnership with former Minnesota State Senator Dave Thompson.

Commissioner Tuma is married to Wendy Tuma, lives in Northfield, and has two adult children, Cal and Molly. He earned his B.A. from Minnesota State University, Mankato, and his J.D. from the University of Minnesota Law School.

His term expires January 4, 2027.





**CARRIE ZALEWSKI** is the Vice President of Transmission and Electricity Markets, where she advances clean energy through policies that ensure fair access to the electricity market.

Previously, Carrie served as the Chair and Agency Head of the Illinois Public Utility Commission, where she brought her expertise as an energy attorney, engineering degree and over 15 years of experience in Environmental and Energy Regulation. She oversaw an agency of over 200 employees, consistently delivering balanced budgets and strong results leading the Commission through the first round of implementation of the Climate and Equitable Jobs Act.

Carrie was the founding Chair of NARUC's Chair Council bringing together Commission Chairs from all 50 states to discuss timely topics. She served on the Board of Directors for the Organization of MISO States (2020-2022) and on the Board of the Organization of PJM States (2023).